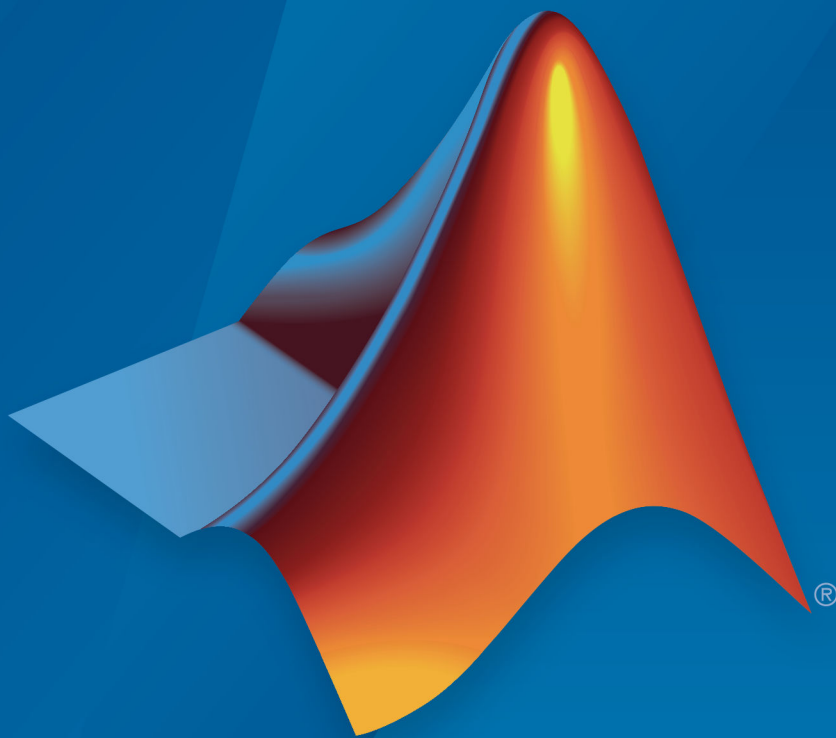


Polyspace[®] Products for Ada Release Notes



MATLAB[®]

How to Contact MathWorks



Latest news: www.mathworks.com
Sales and services: www.mathworks.com/sales_and_services
User community: www.mathworks.com/matlabcentral
Technical support: www.mathworks.com/support/contact_us



Phone: 508-647-7000



The MathWorks, Inc.
1 Apple Hill Drive
Natick, MA 01760-2098

Polyspace® Products for Ada Release Notes

© COPYRIGHT 2008–2019 by The MathWorks, Inc.

The software described in this document is furnished under a license agreement. The software may be used or copied only under the terms of the license agreement. No part of this manual may be photocopied or reproduced in any form without prior written consent from The MathWorks, Inc.

FEDERAL ACQUISITION: This provision applies to all acquisitions of the Program and Documentation by, for, or through the federal government of the United States. By accepting delivery of the Program or Documentation, the government hereby agrees that this software or documentation qualifies as commercial computer software or commercial computer software documentation as such terms are used or defined in FAR 12.212, DFARS Part 227.72, and DFARS 252.227-7014. Accordingly, the terms and conditions of this Agreement and only those rights specified in this Agreement, shall pertain to and govern the use, modification, reproduction, release, performance, display, and disclosure of the Program and Documentation by the federal government (or other entity acquiring for or through the federal government) and shall supersede any conflicting contractual terms or conditions. If this License fails to meet the government's needs or is inconsistent in any respect with federal procurement law, the government agrees to return the Program and Documentation, unused, to The MathWorks, Inc.

Trademarks

MATLAB and Simulink are registered trademarks of The MathWorks, Inc. See www.mathworks.com/trademarks for a list of additional trademarks. Other product or brand names may be trademarks or registered trademarks of their respective holders.

Patents

MathWorks products are protected by one or more U.S. patents. Please see www.mathworks.com/patents for more information.

R2019a

Collaborative Review Support: Review Polyspace for Ada results in web browser and share results using web links	1-2
Source Code Navigation: Keep result pinned while navigating through source code	1-4

R2018b

Bug Fixes

R2018a

Concurrency Modelling: View all tasks and interrupts extracted from code and Polyspace configuration in one view	3-2
Variables Reporting: Export variable list to text file for automated reading	3-3

R2017b

Windows Support: Run Polyspace for Ada on Windows 8, Windows Server 2012 and Windows 10	4-2
Result Review Workflow: Hide results that you reviewed once and justified through source code annotations	4-2
Result Status: Assign statuses that directly correspond to your code analysis workflow	4-3
Code Annotations: Justify results or define your own format with a new annotation format	4-4

R2017a

Change in Icon for Red Checks	5-2
Folder Names in Results	5-2
Changes in analysis options and binaries	5-3

R2016b

Run verification on .psprj file from the command line	6-2
Improved method for adding source files and include folders to projects	6-2
Writable Examples: Modify example projects and restore original versions	6-3

Interactive Graphical Display: Click graph on Dashboard to filter checks	6-3
Verification Objectives in Eclipse: Create review scopes to focus your review	6-3
Filtered Report: Reuse result filters for generated report	6-3
Results Export: Export results to text file for computing graphs and statistics	6-4
Improved PDF report generation	6-4
English Reports in Non-English Locales: Generate English reports on operating systems with a different language ...	6-4
Changes in analysis options and binaries	6-5
Change in report template location	6-7
Changes in Polyspace user interface	6-7
Removing support for Rhapsody	6-8

R2016a

Auto-Complete for Review Comments: Type previous comments partially and allow software to enter the rest	7-2
Simplified Variable Access: View task names instead of aliases	7-2
Source Code Search: Search huge applications more quickly	7-2
Project Language Flexibility: Change your project language at any time	7-2

Improved Result Display for File-by-File Verification: View Combined Summary of Results for All Files in User Interface	7-3
Default Layouts: Switch Easily Between Project Setup and Results Review in User Interface	7-3
Persistent Filter States: Apply filters once and view filtered results across multiple runs	7-3
Polyspace Metrics Tomcat Upgrade: Use upgraded default Tomcat server or custom Tomcat version	7-3
Polyspace Metrics interface updated: View summary of project and metrics	7-4
Change in location of files related to verification	7-4
Polyspace Eclipse plug-in results location moved	7-4
Changes in analysis options	7-5

R2015b

Improved Review Capability: View result details and add review comments in one window	8-2
Improvements in Polyspace Plugin for Eclipse	8-2
Including options multiple times	8-3
Renaming of labels in Polyspace user interface	8-3
Changes in analysis options	8-3

Simplified workflow for project setup and results review with a unified user interface	9-2
Code complexity metrics available in user interface	9-3
Review of global variable usage	9-4
Review of latest results compared to last run	9-5
Improvements in search capability in the user interface	9-5
Simplified results infrastructure	9-6

Polyspace Client for Ada Product	10-2
Code Editor for Editing Source Files in Polyspace User Interface	10-2
Contextual help for verification options and checks	10-2
Default verification level changed	10-3
Improved global menu in user interface	10-3
Improved Project Manager perspective	10-4
Improved Results Manager perspective	10-4
Remote launcher and queue manager renamed	10-5
Polyspace Server for Ada Product	10-7
Remote launcher and queue manager renamed	10-7
Local unit-by-unit verification	10-7

R2014a

Polyspace Client for Ada Product	11-2
Default Text Editor	11-2
Support for Windows 8 and Windows Server 2012	11-2
Polyspace Server for Ada Product	11-3
Support for Windows 8 and Windows Server 2012	11-3

R2013b

Polyspace Client for Ada Product	12-2
Display call context analysis within a procedure	12-2
User interface support for Japanese language	12-2
Project level statistics such as code covered by verification and itemization of checks	12-2
New “results statistics” in the results review user interface	12-2
Improved filtering, grouping and ordering of results in “results summary” view	12-2
Project configuration file extension renamed	12-3
No generation of Excel output	12-3
Starting an R2013a remote verification	12-4
Changes to verification results	12-4
Changes to analysis options	12-4
Options removed	12-4
Polyspace Server for Ada Product	12-5
Call context analysis during verification of procedure	12-5
Polyspace Remote Launcher Manager dialog box renamed	12-5

Polyspace Client for Ada Product	13-2
Modified Polyspace installer	13-2
Verification uses native binary file	13-3
Exact representation of floating point numbers	13-4
Changes to verification results	13-4
Changes to analysis options	13-4
Options removed	13-4
Polyspace Server for Ada Product	13-5
Improved Polyspace Metrics security with HTTPS	13-5

Polyspace Client for Ada Product	14-2
Review of verification results improvement	14-2
Reorganized Configuration pane	14-3
Polyspace plug-in for Eclipse with GNATbench	14-4
Report content filtering	14-4
Parent folder for verification results	14-4
Support for relative paths	14-4
Intermediate verification level support	14-5
Automatic import of comments and justifications	14-5
Storage of temporary files	14-5
Removal of Polyspace in One Click	14-5
Changes to verification results	14-5
Changes to analysis options	14-5
Options removed	14-10
Polyspace Server for Ada Product	14-11
Password-protected access to projects in Polyspace Metrics	14-11

Polyspace Client for Ada Product	15-2
Compilation Environment Templates	15-2
Suppression of NTC, NTL and UNR Checks Caused by Red Checks	15-3
Redefinition of Successful Verification	15-4
Polyspace Report Generator Enhancements	15-4
Polyspace In One Click (POC) Enhancement	15-4
Header Files Without Run-Time Checks	15-5
Improved Access to Polyspace Demos	15-5
Changes to Verification Results	15-5
Changes to Analysis Options	15-5
Options Removed	15-5
 Polyspace Server for Ada Product	 15-6
Enhanced Polyspace Metrics Project Index	15-6
Redefinition of Successful Verification	15-6

Polyspace Client for Ada Product	16-2
Review Orange Checks that are Potential Run-Time Errors	16-2
No Gray Checks in Unreachable Code	16-2
Global Variable Range Information	16-3
Read and Write Access in Dead Code	16-4
Run All Verifications in Project	16-4
Green NIV check for Unchecked_Conversion Function	16-4
 Polyspace Server for Ada Product	 16-5
Running Multiple Verifications Simultaneously	16-5
Polyspace Metrics	16-5

Polyspace Client for Ada Product	17-2
Code Metrics	17-2
Saving Polyspace Metrics Review	17-2
Support for Rational and Aonix Compilers	17-3
Multi-Core Support	17-3
Generated Main with Explicit Tasks and Accept Statements	17-3
Enhancements in Run-Time Checks Perspective	17-3
UOVFL and UNFL Checks Removed	17-4
NIV Checks for Universal Constants	17-4
Variable Range Inconsistency between Variable Access Pane and Tooltips	17-5
Verification Time Limit	17-5
Automatic Addition of Specifications for Selected Source Files	17-5
Stubbed Tasks	17-5
Scaling Issue for Large Applications with Nested Structures/ Arrays	17-6
Product Name Change in Files and Folders	17-6
License Manager Support	17-7
Changes to Verification Results	17-7
Changes to Analysis Options	17-9
Polyspace Server for Ada Product	17-11
Code Metrics	17-11
Saving Polyspace Metrics Review	17-11
Multi-Core Support	17-12
Generated Main with Explicit Tasks and Accept Statements	17-12
Automatic Comment Import for Server Verifications	17-12
License Manager Support	17-13

Polyspace Client for Ada Product	18-2
Polyspace Graphical User Interface	18-2
Data Range Specifications	18-4
Extended Support for Tasks	18-5
Preprocessor Macros for Compilation	18-5
New Options to Classify Run-Time Checks	18-5
Permissiveness on File and Folder Names	18-6
Default Target Processor	18-7
Operating System Support	18-7
Polyspace Server for Ada Product	18-8
Polyspace Metrics Web Interface	18-8
Automatic Verification	18-9
Operating System Support	18-9

Polyspace Client for Ada Product	19-2
License Activation	19-2
Source Code Comment Support	19-3
Eclipse Integration	19-3
Operating System Support	19-4
Polyspace Server for Ada Product	19-5
License Activation	19-5
Queue Manager Interface	19-6
Operating System Support	19-6

R2009b

Polyspace Client for Ada Product	20-2
Report Generator	20-2
Main Generator Enhancements	20-3
Global Data Graphs	20-6
Unit-by-unit Verification	20-7
Operating System Support	20-7
Polyspace Server for Ada Product	20-8
Operating System Support	20-8

R2009a

Polyspace Client for Ada Product	21-2
Character Encoding Options	21-2
Operating System Support	21-2
Polyspace Server for Ada Product	21-3
Operating System Support	21-3

R2008b

Polyspace Client for Ada Product	22-2
Operating System Support	22-2
Polyspace Server for Ada Product	22-3
Operating System Support	22-3

Polyspace Client for Ada Product	23-2
Removed Cygwin Software Dependency for Windows Platforms	23-2
Enhanced Installer	23-3
Viewer Improvements	23-3
Enhanced Compilation Checks	23-3
One-Click Enhancements	23-3
Operating System Support	23-3
Polyspace Server for Ada Product	23-4
Removed Cygwin Software Dependency for Windows Platforms	23-4
Enhanced Installer	23-5
Operating System Support	23-5

R2019a

Version: 6.17

New Features

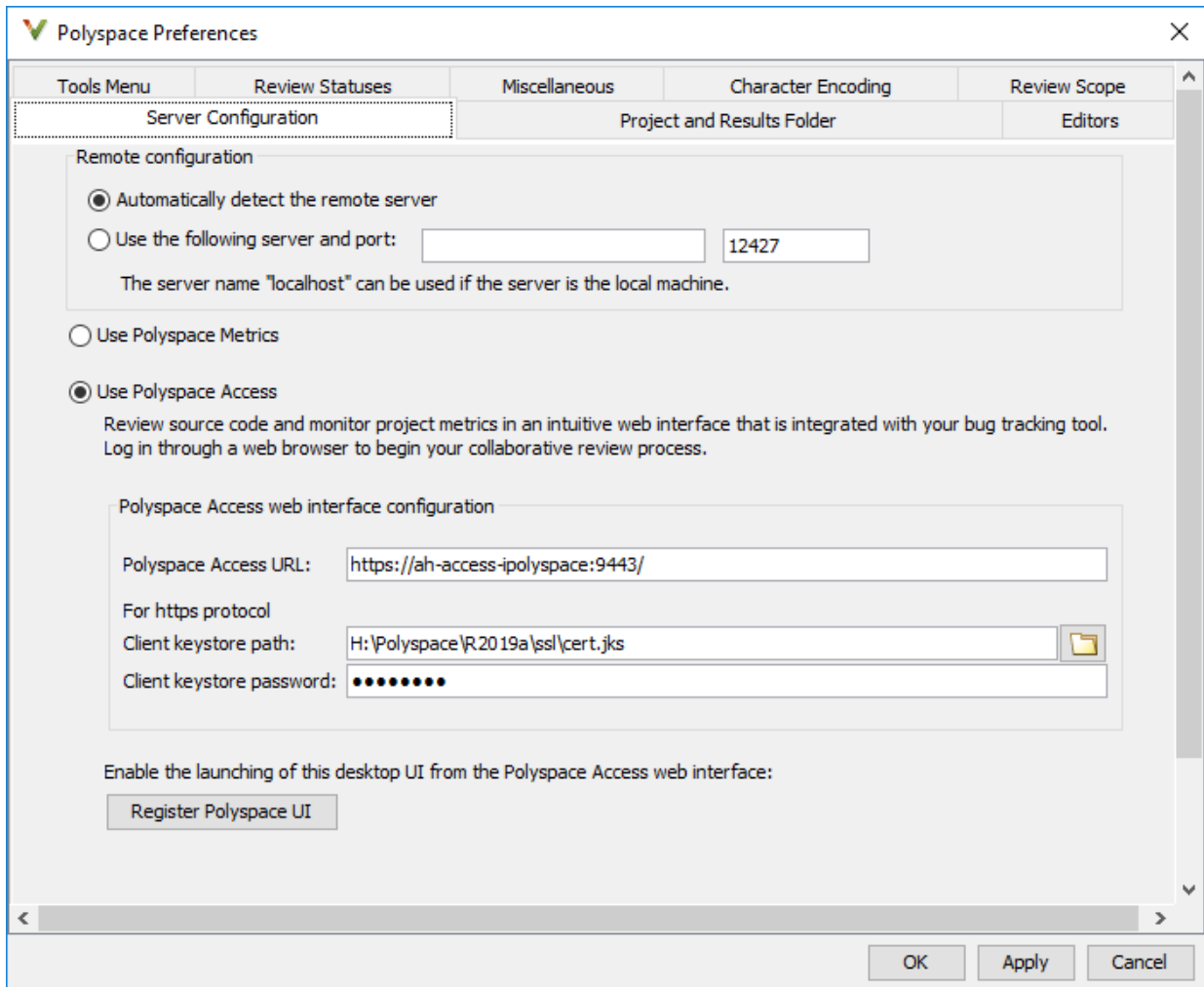
Bug Fixes

Compatibility Considerations

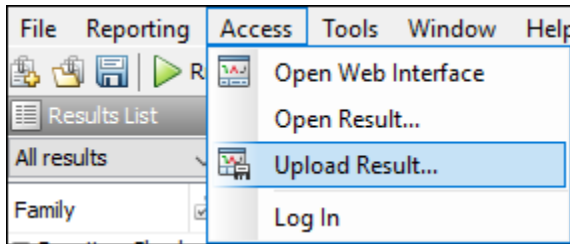
Collaborative Review Support: Review Polyspace for Ada results in web browser and share results using web links

Summary: In R2019a, you can upload Polyspace for Ada results to the Polyspace Access web interface. Developers with a Polyspace Code Prover™ Access™ license can review these results in the web interface and share the results using web links.

To upload results from the Polyspace user interface, select **Tools > Preferences**. On the **Server Configuration** tab, enter the URL of the Polyspace Access web interface and the client keystore path and password.



After setting up communication between the Polyspace user interface and the Polyspace Access web interface, the **Access** menu appears in the Polyspace user interface. You can use this menu to open the web interface, open results from the web interface in the user interface of the desktop product or upload results from the desktop product to the web interface.



For details about setting up and reviewing results in the Polyspace Access web interface, see Polyspace Code Prover Access documentation.

At the command line, after analysis with the `polyspace-ada` command, you can also upload results to the Polyspace Access web interface with the `polyspace-access` command.

Benefits:

- *Facilitate collaborative review:* The web interface streamlines the review efforts of your team. For instance:
 - During a team meeting, findings can be assessed and assigned to developers.
 - Developers can log into the web interface to review findings assigned to them, and determine whether to justify the findings or fix them.
 - A project manager can track the progress of the review by filtering the list of results for findings that are still open.
- *Authenticate client access:* The web interface is behind a login. Only users with a Polyspace Code Prover Access license and the appropriate credentials can view the results from their web browser.

Source Code Navigation: Keep result pinned while navigating through source code

Summary: In R2019a, clicking a result in the source code does not change the result selection on the **Results List** and the details on the **Result Details** pane.

Benefits: To find the root cause of a result, you have to navigate through the source code. You can keep the result pinned on the **Results List** and **Result Details** pane during this navigation.

Compatibility Considerations

Previously, if you clicked a token in the source code showing a result, the selection on the **Results List** pane and the information on the **Result Details** pane changed to the clicked result. To emulate this behavior, Ctrl-click the token in the source code or right-click and select **Select Results At This Location**.

R2018b

Version: 6.16

Bug Fixes

R2018a

Version: 6.15

New Features

Bug Fixes

Concurrency Modelling: View all tasks and interrupts extracted from code and Polyspace configuration in one view

Summary: In R2018a, you can see the tasks and interrupts extracted from your code and configuration in one view.

After analysis, click the **Concurrency modeling** link on the **Dashboard**.

Entry point	Set by
<input type="checkbox"/> ONE_INTERRUPT1() Starts after the main entry point completes	Manually configured
<input type="checkbox"/> ONE_INTERRUPT2() Starts after the main entry point completes	Manually configured
<input type="checkbox"/> REGULATE() Starts after the main entry point completes	Unit declaration
<input type="checkbox"/> SERVER1() Starts after the main entry point completes	Unit declaration
<input type="checkbox"/> SERVER2() Starts after the main entry point completes	Unit declaration

[? Multitasking](#) Close

Benefits: You can verify if Polyspace correctly detected your multitasking configuration from your code. For instance, if you know a priori that a specific function acts as an interrupt, you can spot-check whether Polyspace considers the function as an interrupt.

Variables Reporting: Export variable list to text file for automated reading

Summary: In R2018a, you can export the list of global variables in your code to a text file, along with the read and write operations on them.

See Export Global Variable List.

Benefits: You can parse the text file by using MATLAB® or Excel® and generate graphs or statistics about your global variables that you cannot readily obtain from the user interface.

R2017b

Version: 6.14

New Features

Bug Fixes

Windows Support: Run Polyspace for Ada on Windows 8, Windows Server 2012 and Windows 10

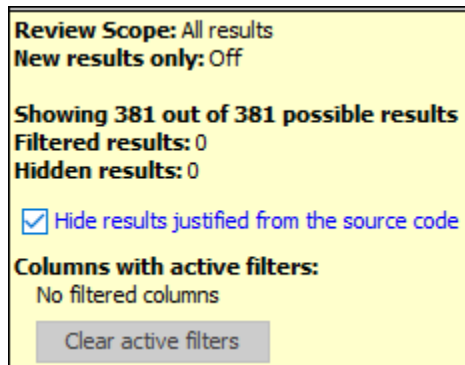
Summary: In R2017b, Polyspace for Ada is fully supported on Windows® 8, Windows Server 2012 and Windows 10.

Benefits: You can run the software on these operating systems without having to resort to compatibility mode.

Result Review Workflow: Hide results that you reviewed once and justified through source code annotations

Summary: In R2017b, if you justify a result through source code annotations, subsequent analyses do not redisplay result again. Although the result still appears in your source code, it does not appear in your results list.

If you want to revisit those justified results, you can make them visible in one-click.



Benefits: When you decide not to fix a finding, you can justify it through source code annotations. That finding does not clutter your subsequent analysis results.

Suppose the analysis flags an error-handling statement as unreachable code. You do not want to remove the statement because future code can trigger the error and make the error-handling necessary. You can justify the unreachable code and choose not to see it again.

Additional Considerations

-
- *How can I use source code annotations to justify a result?*

You can directly type source code annotations in the correct format.

Alternatively, you can copy annotations from information in the user interface.

- In Eclipse, right-click the result to insert a justification directly in the source code.
- In Eclipse and the Polyspace user interface, assign one of the statuses **Justified**, **No action planned**, or **Not a defect** to a result. Right-click the result to copy your justification and paste it in a source code editor.
- *Will the hidden results still appear in the report?*

The hidden results still appear in the report. The results are hidden from view to save review effort. The reports are meant for complete documentation of your results. You cannot hide analysis results from the reports.

Result Status: Assign statuses that directly correspond to your code analysis workflow

Summary: In R2017b, you can assign the following statuses to a result. Each status corresponds to a stage in your code analysis workflow.

- Unreviewed (default status)
- To investigate
- To fix
- Justified
- No action planned
- Not a defect
- Other

Benefits: You can follow your review progress more easily.

Additional Considerations

How can I use the statuses to follow my review progress?

You can follow your progress as follows:

- Polyspace user interface: You can filter all results that have a certain status.
- Polyspace Metrics: You can see the percentage of results reviewed and justified. If you assign a status other than Unreviewed to a result, the software considers the result as reviewed. If you assign one of these statuses, the software considers the result as justified: Justified, No action planned or Not a defect.

Can I create my own status?

You can still create custom statuses. Select **Tools > Preferences** and create your own statuses on the **Review Statuses** tab.

Compatibility Considerations

If you open results from a previous release, the statuses are automatically updated to the new release. The updates are:

- Fix or Investigate → To fix or To investigate
- Improve → To fix
- Undecided → Unreviewed.

If your source code annotations use statuses from a previous release, the software reads your annotations using the above updates. The software does not change the annotations themselves.

Code Annotations: Justify results or define your own format with a new annotation format

Summary: In R2017b, you can justify your results with the new Polyspace annotation syntax, or by using your own custom format. Polyspace also interprets existing code annotations that use a different syntax.

Benefits:

- *Easier results review:* With the new annotation format, you can provide a justification for multiple types of results on the same line. Previously, you had to enter the justification for different types of results, such as defects and coding rules violations, on different lines.

-
- *Custom annotation format:* You can use an XML file to define any annotation format and map it to the Polyspace syntax. When you analyze your code, Polyspace can interpret the annotations regardless of the format.

Polyspace still supports annotations that use the old syntax.

R2017a

Version: 6.13

New Features

Bug Fixes

Compatibility Considerations

Change in Icon for Red Checks

In R2017a, a new icon is used to denote definite run-time errors or red checks.

Before R2017a:

Family	<input checked="" type="checkbox"/>	Check
! *		Division by zero
! *		Arithmetic exceptions
! *		Overflow
! *		Non-terminating call
! *		Non-terminating call

R2017a:

Family	<input checked="" type="checkbox"/>	Check
● *		Division by zero
● *		Arithmetic exceptions
● *		Overflow
● *		Non-terminating call
● *		Non-terminating call

Folder Names in Results

In R2017a, the source folder name is shown in the list of analysis results.

Family	Check	File	Folder
● *	Division by zero	example.adb	<input checked="" type="checkbox"/> (All)
● *	Arithmetic exceptions	example.adb	<input type="checkbox"/> (Custom...)
● *	Overflow	array.adb	<input checked="" type="checkbox"/> (Empty)
● *	Non-terminating call	sensitivity.adb	<input checked="" type="checkbox"/> H:\myProject\mySourceFiles 1
● *	Non-terminating call	example.adb	<input checked="" type="checkbox"/> H:\myProject\mySourceFiles 2
● *	Non-terminating loop	example.adb	
● *	Non-terminating loop	tasks.adb	
✕ *	Unreachable code	example.adb	H:\myProject\mySourceFiles 1
✕ *	Unreachable code	example.adb	H:\myProject\mySourceFiles 1
✕ *	Unreachable code	sensitivity.adb	H:\myProject\mySourceFiles 1
✕ *	Unreachable code	sensitivity.adb	H:\myProject\mySourceFiles 1
?	Non-initialized local variable	util.adb	H:\myProject\mySourceFiles 2

You can order your results by folders or filter results belonging to specific folders. Using custom filters, you can filter out all subfolders of a folder in one click.

Changes in analysis options and binaries

In R2017a, the following options have been removed.

Removed Options

Option	Status	More Information
Ignore float rounding (-ignore-float-rounding)	Removed	
No automatic stubbing (-no-automatic-stubbing)	Error	Option will be removed in a future release.
gui-api	Error	Binary will be removed in a future release. Use instead, polyspace-comments-import.
polyspace-automatic-verification	Error	Binary will be removed in a future release.
polyspace-remote	Error	Binary will be removed in a future release.
polyspace-verifier	Error	Binary will be removed in a future release.
rte-kernel	Error	Binary will be removed in a future release.
polyspace-remote-ada95	Removed	Use instead, polyspace-remote-ada -lang ada95
polyspace-remote-desktop-ada	Removed	Use instead, polyspace-remote-ada -desktop -lang ada83
polyspace-remote-desktop-ada95	Removed	Use instead, polyspace-remote-ada -desktop -lang ada95
polyspace-ada95	Removed	Use instead, polyspace-ada -lang ada95
polyspace-desktop-ada	Removed	Use instead, polyspace-ada -desktop -lang ada83
polyspace-desktop-ada95	Removed	Use instead, polyspace-ada -desktop -lang ada95
polyspace-ver	Removed	Use instead, polyspace-ada -ver

Compatibility Considerations

If you use scripts that contain the removed or updated options, change your scripts accordingly.

R2016b

Version: 6.12

New Features

Bug Fixes

Compatibility Considerations

Run verification on .psprj file from the command line

If you already have a project created in the Polyspace Interface, you can now use that `.psprj` file to run from a command line.

Use the new option `polyspace-ada -generate-launching-script-for <PSPRJ FILE>` to generate the files to run the analysis from the command line. The following files are generated:

- `source_command.txt` — List of source files in the project
- `options_command.txt` — List of analysis option settings
- `launchingCommand.sh` or `launchingCommand.bat` — Script that runs the verification using `options_command.txt`, `source_command.txt`. The script can also take additional analysis options as parameters.

For more information, see [Create Command-Line Script from Project File](#).

Improved method for adding source files and include folders to projects

Before R2016b, when you created a project, you added and removed source files and include folders individually. If you moved your source files or added new files to your programming project, you would need to re-add the files into your Polyspace project.

Starting in R2016b, you create a Polyspace project by using root source folders and include folders. The root folder location represents the top of the hierarchy for your source files. Polyspace represents all files relative to the root source locations. When you add a root source location, you can:

- See all source files under the root folder (and subfolders if desired).
- Exclude files and subfolders in the hierarchy to change the active list of source files to analyze.
- Refresh the source file list to see new files or folders in the root source hierarchy.
- Modify the root source folder path.
- If you use a revision control system, change the root folder location to point to different versions of your source files.

The new process is similar for include folders. Instead of adding individual folders, you add a root include folder location. Polyspace adds all include folders underneath the root

include location that contains include files. You can refresh and modify the include folder path just like the source folder path.

For more information, see [Create Project](#).

Writable Examples: Modify example projects and restore original versions

The examples projects found under **Help > Examples** are now easier to use. The first time you open an example project, a writable version is saved in your Polyspace workspace. In the writable project, you can test configuration options, change sources, and rerun the example. If you want to refresh the example with a clean version, select **Help > Examples > Restore Default Examples**.

Interactive Graphical Display: Click graph on Dashboard to filter checks

In R2016b, you can narrow down the scope of your review by using a graphical display of analysis results. Previously you used the **Check distribution** graph to obtain an overview of the analysis results and determine which check colors to focus on. Now you can also select a color in the graph to view only checks of that color.

For more information, see [Filter and Group Results](#).

Verification Objectives in Eclipse: Create review scopes to focus your review

From the Eclipse™ plugin, you can now create custom review scopes. Review scopes filter your results to only the run-time checks and code metrics that you want to see. For more information, see *Create Custom Review Scopes*.

Filtered Report: Reuse result filters for generated report

In R2016b, if you apply filters to your results, you can reuse those filters for the generated report. For instance, you can use filters to view only the following subset of results on the **Results List** pane and then reuse those filters for the report.

- View only critical checks (red, gray and critical orange) and create a report with those checks only.

- View only new results found since the last verification and create a report with the new results only.

On the **Results List** pane, you can apply complicated filtering criteria to show only the results that are most meaningful to you. You can reuse these criteria for your generated report and show only the results that you want the report reviewer to focus on. For more information on the filters, see [Filter and Group Results](#).

The report shows which filters you have applied. Another person reviewing your report can see your filtering criteria.

Results Export: Export results to text file for computing graphs and statistics

In R2016b, you can export your results to a tab delimited text file. You can parse the text file by using applications such as Excel or MATLAB and generate graphs or statistics about your results that you cannot obtain readily from the user interface. For instance, for each check type (**Division by zero**, **Overflow**), you can calculate how many checks are red, orange or green.

For more information, see [Export Results to Text File](#).

Improved PDF report generation

In R2016b, the generation of PDF reports is improved.

- The report generation is faster. For large results, the report generation is much less likely to cause out-of-memory errors.
- The reports use an improved visual display.

English Reports in Non-English Locales: Generate English reports on operating systems with a different language

In R2016b, even if your operating system has a display language (Windows) or locale (Linux®) such as Japanese or Korean, you can still generate English reports. See [Generate Report After Verification](#).

Changes in analysis options and binaries

In R2016b, the following options have been removed.

Removed Options

Option	Status	More Information
Ignore float rounding (-ignore-float-rounding)	Error	Option will be removed in a future release.
Import folder (-import-dir)	Warning	Option will be removed in a future release.
No automatic stubbing (-no-automatic-stubbing)	Warning	Option will be removed in a future release.
-easy-setup-preprocess	Warning	Option will be removed in a future release.
-known-NTC	Removed	Polyspace includes this behavior by default. Remove this option from any existing configurations.
polyspace-remote-ada95	Error	Binary will be removed in a future release. Use instead, polyspace-remote-ada -lang ada95
polyspace-remote-desktop-ada	Error	Binary will be removed in a future release. Use instead, polyspace-remote-ada -desktop -lang ada83
polyspace-remote-desktop-ada95	Error	Binary will be removed in a future release. Use instead, polyspace-remote-ada -desktop -lang ada95
polyspace-ada95	Error	Binary will be removed in a future release. Use instead, polyspace-ada -lang ada95
polyspace-desktop-ada	Error	Binary will be removed in a future release. Use instead, polyspace-ada -desktop -lang ada83

Option	Status	More Information
polyspace-desktop-ada95	Error	Binary will be removed in a future release. Use instead, polyspace-ada -desktop -lang ada95
polyspace-automatic-verification	Warning	Binary will be removed in a future release.
polyspace-verifier	Warning	Binary will be removed in a future release.
rte-kernel	Warning	Binary will be removed in a future release.
polyspace-remote	Warning	Binary will be removed in a future release.
gui-api	Warning	Binary will be removed in a future release. Use instead, polyspace-comments-import.

Compatibility Considerations

If you use scripts that contain the removed or updated options, change your scripts accordingly.


Change in report template location

The location of the report template files has changed to *MATLAB_Install*/toolbox/polyspace/psrptgen/templates. Here, *Matlab_Install* is the MATLAB installation folder.

If you use the report templates provided by Polyspace, the change does not impact you. If you use MATLAB Report Generator™ to modify the Polyspace report templates, you can open the templates from this new location.

Changes in Polyspace user interface

The following table lists minor changes to the user interface including new pane names and new icons.

- **Results List** — Window showing list of results, previously called **Results Summary**.
-  — Button to remove items in the configuration or projects.
- The icons on the **Results List** pane have been rearranged.

In R2016a, the icons were arranged as follows.



In R2016b, the same icons are arranged as follows.



Removing support for Rhapsody

Polyspace Client™ for Ada no longer supports an IBM® Rational® Rhapsody® plug-in.

R2016a

Version: 6.11

New Features

Bug Fixes

Auto-Complete for Review Comments: Type previous comments partially and allow software to enter the rest

In R2016a, the **Results Summary** or **Result Details** pane provides automatic completion of review comments. If you start typing a review comment that you have entered previously, a dropdown list shows the previous entry. You can select the previous comment from this list instead of retyping the comment again.

Simplified Variable Access: View task names instead of aliases

In R2016a, on the **Variable Access** pane, in the **Written by task** and **Read by task** columns, you see the task names. Previously, the columns contained aliases such as t1, t2, t3, . . . You viewed the task names using a legend for the aliases.

Source Code Search: Search huge applications more quickly

In R2016a, search results are produced more quickly. If you search for a string in a huge application, you can see a significant improvement in the time it takes for search results to appear.

You can search for a string in two ways:

- Enter the search string in the box on the **Search** pane.
- Right-click a word in your code on the **Source** pane and select a search option.

Project Language Flexibility: Change your project language at any time

Projects in the Polyspace interface are no longer fixed to Ada83 or to Ada95. When you create a project, you can add any files to the project. After you add files, select the language for your analysis using the Source code language option. The default language is Ada95. If you add or change the files in your project, you can change the language to reflect the most suitable analysis type.

Improved Result Display for File-by-File Verification: View Combined Summary of Results for All Files in User Interface

In R2016a, if you perform a file-by-file verification, you can see a summary of results for all files on the **Dashboard** pane. You can open the results for each file directly from this summary table. Previously, you obtained this synthesis in an external html file.

For more information, see [Run File-by-File Local Verification](#).

Default Layouts: Switch Easily Between Project Setup and Results Review in User Interface

In R2016a, you have two default layouts of panes in the Polyspace user interface, one for project setup and another for results review.

- When setting up your projects, select **Window > Reset Layout > Project Setup**.
- When reviewing results, select **Window > Reset Layout > Results Review**.

For more information, see [Organize Layout of Polyspace User Interface](#).

Persistent Filter States: Apply filters once and view filtered results across multiple runs

In R2016a, if you apply a set of filters to your verification results and rerun verification on the project module, your filters are also applied to the new results. You can specify your filters once and suppress results that are not relevant for you across multiple runs.

The **Results Summary** pane shows the number of results filtered from the display. If you place your cursor on this number, you can see the applied filters.

For more information, see [Filter and Group Results](#).

Polyspace Metrics Tomcat Upgrade: Use upgraded default Tomcat server or custom Tomcat version

Polyspace Metrics now uses Tomcat 8.0.22 to run the Polyspace Metrics web interface.

If you want to use your own version of Tomcat, you can now specify a custom Tomcat server in the daemon configuration file. To add your custom tomcat web server, add the following line to the daemon configuration file.

```
tomcat_install_dir = <path/to/tomcat>
```

The daemon configuration file is located in:

- Windows — `\%APPDATA%\Polyspace_RLDatas\polyspace.conf`
- Linux — `/etc/Polyspace/polyspace.conf`

Polyspace Metrics interface updated: View summary of project and metrics

You can now view project-level metric summaries from the main Polyspace Metrics page using one of the following methods:

- On the **Projects** tab, roll your mouse over the list of projects to open a window displaying a summary of the project and project metrics.
- On the **Projects** or **Runs** tab, right-click the column headers to add new columns to the table. new columns you can add include Coding Rules, Bug-Finder Checks, Code Metrics, and Review Progress.

Change in location of files related to verification

Polyspace Client for Ada no longer uses the folder `$(HOME)/.rte/pst_database` for storing files related to the verification. If you are upgrading from a previous release to R2016a or later, you can remove this folder.

Polyspace Eclipse plug-in results location moved

When you analyze projects using the Polyspace plug-in for Eclipse, your results used to be stored inside your Eclipse project under *eclipse project folder*\polyspace. For all new Eclipse projects, Polyspace now stores results in the Polyspace Workspace under *Polyspace_Workspace\EclipseProjects\Eclipse Project Name*, where *Polyspace_Workspace* is the default project location specified in your Polyspace Interface preferences. For more information, see Results Location.

Changes in analysis options

In R2016a, the following options have been added, changed, or removed.

Updated Options

Option	Status	More Information
Source code language	New in the Polyspace Interface. Default language changed to Ada95	User interface version of the <code>-lang</code> option. Select your project language to set compilation rules and enable language specific analysis options.

Removed Options

Option	Status	More Information
Ignore float rounding (-ignore-float-rounding)	Warning	Option will be removed in a future release.
-less-range-information	Warning	Option will be removed in a future release.
-known-NTC	Error	Polyspace includes this behavior by default. Remove this option from any existing configurations.
polyspace-remote-ada95	Warning	Binary will be removed in a future release. Use instead, polyspace-remote-ada -lang ada95
polyspace-remote-desktop-ada	Warning	Binary will be removed in a future release. Use instead, polyspace-remote-ada -desktop -lang ada83
polyspace-remote-desktop-ada95	Warning	Binary will be removed in a future release. Use instead, polyspace-remote-ada -desktop -lang ada95
polyspace-ada95	Warning	Binary will be removed in a future release. Use instead, polyspace-ada -lang ada95
polyspace-desktop-ada	Warning	Binary will be removed in a future release. Use instead, polyspace-ada -desktop -lang ada83
polyspace-desktop-ada95	Warning	Binary will be removed in a future release. Use instead, polyspace-ada -desktop -lang ada95

Compatibility Considerations

If you use scripts that contain the removed options or binaries, change your scripts accordingly.

R2015b

Version: 6.10

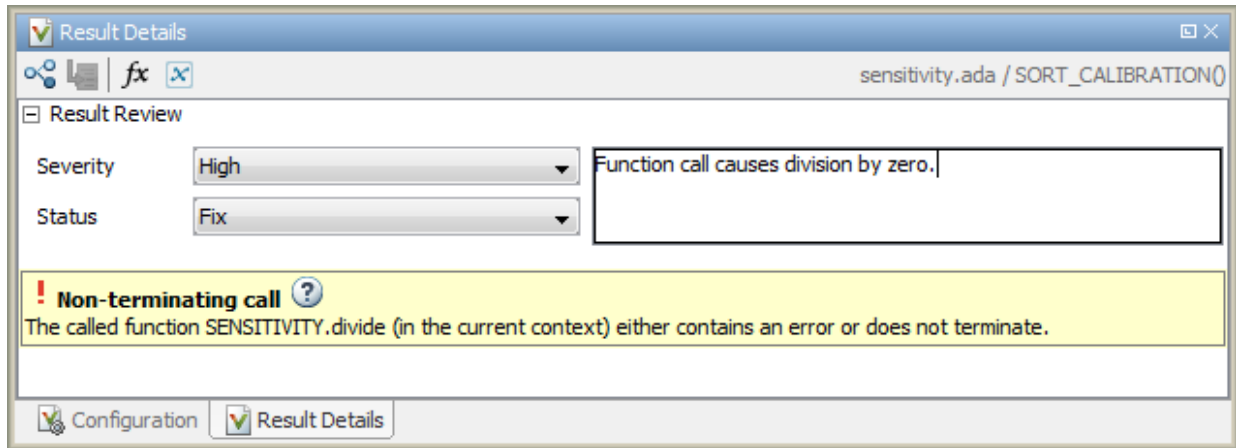
New Features

Bug Fixes

Compatibility Considerations


Improved Review Capability: View result details and add review comments in one window

In R2015b, the **Check Details** pane is renamed **Result Details**. On this pane, in addition to viewing details about a result, you can now enter review information such as **Classification**, **Status**, and comments. For more information, see [Add Review Comments to Results](#).



Improvements in Polyspace Plugin for Eclipse

In R2015b, the following improvements have been made to the Polyspace plugin for Eclipse:

- When you select a result in the **Results Summary** view, the **Result Details** view displays additional information about the result. In the **Result Details** view, if you click the  button next to the result name, you can see a brief description and examples of the result.
- You can switch to a Polyspace perspective that shows only the information relevant to a Polyspace verification. To open the perspective, select **Window > Open Perspective > Other**.

Including options multiple times

You can now specify analysis options multiple times. This feature is available only at the command line or using the command-line names in the **Advanced options** dialog box in the user interface. Customize pre-made configurations without having to find the changed options in the options file.

If you specify an option multiple times, only the last setting is used. The user interface also follows this rule. If you specify **m68k** for **Target processor type** and **-target i386** for **Advanced options**, this counts as multiple analysis option specifications. Polyspace uses the target specified in the **Advanced options** box, **i386**.


Compatibility Considerations

If your current configuration specifies analysis options multiple times, change the configuration by either:

- Removing the unnecessary analysis options.
- Moving the desired analysis options to the end of the configuration.

Renaming of labels in Polyspace user interface

The labels associated with specifying constraints have changed as follows:

- On the **Configuration** pane, the field **Variable/function range setup** is changed to **Constraint setup**.
- On the **Results Summary** and **Result Details** pane, the field **Classification** is changed to **Severity**. You assign a **Severity** such as High, Medium and Low to a defect to indicate how critical you consider the issue.
- When you click the  icon beside the **Constraint setup** field, a new window opens. The window name is changed from **Load DRS file** to **Load a constraint file**.

Changes in analysis options

In R2015b, the following options have been added or removed:

Option	Status	Description
-known-NTC	Removed	Polyspace includes this behavior by default. Remove this option from any existing configurations.
-permissive	Removed	Use -continue-with-in-out-niv instead.
-automatic-stubbing	Removed	Polyspace includes this behavior by default. Remove this option from any existing configurations.
-float-overflows	Removed	Polyspace includes this behavior by default. Remove this option from any existing configurations.
-continue-with-existing-host	Removed	Polyspace includes this behavior by default. Remove this option from any existing configurations.
-allow-unsupported-linux	Removed	Polyspace includes this behavior by default. Remove this option from any existing configurations.
-passes-time	Removed	Polyspace includes this behavior by default. Remove this option from any existing configurations.
-continue-with-red-error	Removed	Polyspace includes this behavior by default. Remove this option from any existing configurations.
-voa	Removed	Polyspace includes this behavior by default. Remove this option from any existing configurations.
-machine-architecture	Removed	Polyspace includes this behavior by default. Remove this option from any existing configurations.
-strict	Removed	This option is no longer supported. Remove this option from any existing configurations.

Option	Status	Description
-continue-with-compile-error	Removed	This option is no longer supported. Remove this option from any existing configurations.

Compatibility Considerations

If you use scripts that contain any of the removed or updated options, change your scripts accordingly.

R2015a

Version: 6.9

New Features

Simplified workflow for project setup and results review with a unified user interface

In R2015a, the Project and Results Manager perspectives are now unified. You can run verification and review results without switching between two perspectives.

The major changes are:

- You can start a new verification during your results review. Previously, you started a new verification only from the Project Manager perspective.
- After a verification, the result opens automatically. If you are looking at a previous result when a verification is over, you can load the new result or retain the previous one on the **Results Summary** pane. If you retain the previous results, you can later open the new results from the **Project Browser**. The new results are highlighted.
- You can have any of the panes open in the unified interface.

Previously, you could open the following panes only in one of the two perspectives.

Project Manager	Results Manager
<ul style="list-style-type: none"> • Project Browser: Set up project. • Configuration: Specify analysis options for your project. • Output Summary: Monitor progress of verification. • Full Log: Find all information about a verification. 	<ul style="list-style-type: none"> • Results Summary: View Polyspace results. • Source: View read-only form of source code color coded with Polyspace results. • Check Details: View details of a particular result. • Check Review: Comment on a particular result. • Variable Access: View global variables and read/write operations on them. • Call Hierarchy: View callers and callees of a function. • Results Properties: Same as Full Log, but associated with results instead of a project. This pane has been removed. • Settings: Same information as Configuration, but associated with results instead of a project. This pane has been removed. • Orange Sources: View sources of orange checks. • Sensitivity Context: For a check that has a different color for different function calls, view the check color for each function call.

Code complexity metrics available in user interface

In R2015a, you can view code complexity metrics in the Polyspace user interface. Previously, this information was available only in the Polyspace Metrics web interface.

In the user interface, you can:

- Specify a limit for the value of a metric. If the metric value for your source code exceeds this limit, the metric appears red on the **Results Summary** pane.
- Justify the value of a metric. If a metric value exceeds specified limits and appears red, you can add a comment with the rationale.
- Generate a report containing the metric values and associated comments and justifications.

Combining these actions, you can enforce coding standards across your organization.

Reducing the complexity of your code improves code readability, reduces the possibility of coding errors, and allows more precise Polyspace verification.

For more information, see Code Metrics.

Review of global variable usage

In R2015a, you can comment and justify global variable usage on the **Results Summary** pane. Previously, you viewed global variable usage on the **Variable Access** pane, but could not comment on them.

On the **Results Summary** pane, global variables are classified into one of the following categories.

Category		Color	Meaning
Shared	Potentially unprotected	Orange	Global variables shared between multiple tasks but possibly not protected from concurrent access by the tasks
	Protected	Green	Global variables shared between multiple tasks and protected from concurrent access by the tasks

Category		Color	Meaning
Not shared	Unused	Gray	Global variables used in a single task
	Used	Black	Global variables declared but not used

For code that you do not intend for multitasking, all variables are nonshared and can be either used or unused. For code that you intend for multitasking, you can specify tasks and protections through the analysis options for multitasking. For more information, see Entry points, Critical section details and Temporally exclusive tasks.

You can still view the global variables on the **Variable Access** pane.

- To comment and justify potentially unprotected and unused global variables, use the **Results Summary** pane.
- To find all read and write operations on a global variable, use the **Variable Access** pane.

For more information, see Global Variables.

Review of latest results compared to last run

In R2015a, you can review only new results compared to the previous run.

If you rerun your verification, the new results are displayed with an asterisk (*) against them on the **Results Summary** pane. To filter only these new checks, select the **New results** box.

If you make changes in your source code, you can use this feature to see only the checks introduced due to those changes. You can avoid reviewing checks in the source code that you did not change.

Improvements in search capability in the user interface

In R2015a, the **Search** pane allows you to search for a string in various panes of the user interface.

To search for a string in the new user interface:

- 1 If the **Search** pane is not visible, open it. Select **Window > Show/Hide View > Search**.
- 2 Enter your string in the search box.
- 3 From the drop-down list beside the box, select names of panes you want to search.

The **Search** pane consolidates all the search options previously available:

- In the Project Manager perspective, the global search box allowed you to search on the **Configuration** pane.
- In the Results Manager perspective, the global search box allowed you to search on the **Source**, **Results Summary**, **Call Hierarchy**, and **Variable Access** panes.
- Search boxes on the **Output Summary** and **Full Log** panes allowed you to search on those panes.

Simplified results infrastructure

Polyspace results folders are reorganized and simplified. Files have been removed, combined, renamed, or moved. The changes do not affect the results that you see in the Polyspace environment.

Some important changes and file locations:

- The main results file is now encrypted and renamed `ps_results.rte`. You can view results only in the Polyspace environment.
- The log file, `Polyspace_R2015a_project_date-time.log` has not changed.

For more information, see Results Folder Contents.

R2014b

Version: 6.8

New Features

Bug Fixes

Compatibility Considerations

Polyspace Client for Ada Product

Code Editor for Editing Source Files in Polyspace User Interface

In R2014b, by default, you can edit your source files inside the Polyspace user interface.

- In the Project Manager perspective, on the **Project Browser** tree, double-click your source file.
- In the Results Manager perspective, right-click the **Source** pane and select **Open Source File**.

Your source files appear on a **Code Editor** tab. On this tab, you can edit and save your source files.

To use an external text editor, change your preferences.

- 1 Select **Tools > Preferences**.
- 2 Specify an external editor on the **Editors** tab.

For more information, see Specify External Text Editor.


Contextual help for verification options and checks

In R2014b, contextual help is available for verification options in the Polyspace interface and its plug-ins. To view the contextual help:

- 1 Hover your cursor over a verification option in the **Configuration** window.
- 2 Inside the tooltip, select the “More Help” link.

The documentation for that analysis option appears in a new window.

Contextual help is available in the Polyspace interface for checks. To view the contextual help:

- 1 In the Results Manager perspective, select a runtime error.
- 2 Inside the **Check Details** window, select .

The documentation for that check appears in a dockable window.

For more information about getting help in the Polyspace interfaces, see Learning More.

Default verification level changed

In R2014b, unless you specify a verification level explicitly, Polyspace verification performs two passes on your source code instead of four. For instance:

- In the user interface, on the **Output Summary** tab, you can see that the verification continues to **Level2**. For more passes, on the **Configuration** pane, under the **Precision** node, select a **Verification level**.
- At the command line, the verification implicitly uses `-to pass2`. For more passes, use the `-to` option explicitly with a higher pass value.

The default verification is completed in much less time.

For more information, see Verification level.

Compatibility Considerations

If you do not specify a verification level explicitly in your `polyspace-ada` command, your verification runs to **Software Safety Analysis Level 2**. In most cases, this verification level produces only slightly more orange checks than **Software Safety Analysis Level 4**. However, if you see a significant change in your results, to reproduce your earlier results:

- In the user interface, select **Software Safety Analysis Level 4** for **Verification level**.
- At the command line, use the option `-to pass4` with the `polyspace-ada` command.

Improved global menu in user interface

The global menu in the Polyspace user interface has been updated. The following table lists the current location for the existing global menu options.

Goal	Prior to R2014b	R2014b
Open the Polyspace Metrics interface in your web browser.	File > Open Metrics Web Interface	Metrics > Open Metrics

Goal	Prior to R2014b	R2014b
Upload results from the Polyspace user interface to Polyspace Metrics.	File > Upload in Polyspace Metrics repository	Metrics > Upload to Metrics
Update results stored in Polyspace Metrics with your review comments and justifications.	File > Save in Polyspace Metrics repository	Metrics > Save comments to Metrics
Generate a report from results after verification.	Run > Run Report > Run Report	Reporting > Run Report
Open generated report.	Run > Run Report > Open Report	Reporting > Open Report
Import review comments from previous verification.	Review > Import	Tools > Import Comments
Specify settings that apply to all Polyspace projects.	Options > Preferences	Tools > Preferences
Specify settings for remote verification.	Options > Metrics and Remote Server Settings	Metrics > Metrics and Remote Server Settings

Improved Project Manager perspective

The following changes have been made in the Project Manager perspective:

- The **Progress Monitor** tab does not exist anymore. Instead, after you start a verification, you can view its progress on the **Output Summary** tab.
- In the **Project Browser**, projects appear sorted in alphabetical order instead of order of creation.

Improved Results Manager perspective

The following changes have been made in the Results Manager perspective:

- To prioritize your orange check review, use the **Show** menu on the **Results Summary** pane. This menu replaces the previously available methodologies for the same purpose.

- To display red, gray and orange checks likely to be run-time errors, from the **Show** menu, select **Critical checks**. This option replaces the **First checks to review** methodology.
- To display all checks, from the **Show** menu, select **All checks**. This option replaces the **All checks** methodology.
- The methodologies **Methodology for Ada > Light** and **Methodology for Ada > Moderate** no longer exist.
- To create your own subset of orange checks to review, select **Tools > Preferences**. On the **Review Scope** tab, specify the number or percentage of orange checks of each type to review. The options on this tab replace the options on the **Review Configuration** tab.
- To group your checks, use the **Group by** menu on the **Results Summary** pane.
 - To leave your checks ungrouped, instead of **List of Checks**, select **Group by > None**.
 - To group checks by check color and type, instead of **Checks by Family**, select **Group by > Family**.
 - To group checks by file and function, instead of **Checks by File/Function**, select **Group by > File**.
- To view the percentage of checks that you have justified, instead of the **Review Statistics** pane, use the **Justified** column on the **Results Summary** pane. On this pane:
 - To view the percentage of checks that you justified broken down by color/type, select **Group by > Family**.
 - To view the percentage of checks that you justified broken down by file/function, select **Group by > File**.

Remote launcher and queue manager renamed

Polyspace has renamed the remote launcher and the queue manager that shows jobs sent for remote verification. The server computer that manages all other server computers is still called the Queue Manager server.

Previous name	Use instead	More information
polyspace-rl-manager	polyspace-server-settings	Only the binary name has changed. The interface title, Metrics and Remote Server Settings , is unchanged.
polyspace-spooler	polyspace-job-monitor	The binary and the interface titles have changed. Interface labels have changed in the Polyspace interface and all its plug-ins.
Queue Manager or Spooler	Job Monitor	

Compatibility Considerations

You receive a warning if you use the old binaries or functions.

Polyspace Server for Ada Product

Remote launcher and queue manager renamed

Polyspace has renamed the remote launcher and the queue manager that shows jobs sent for remote verification. The server computer that manages all other server computers is still the Queue Manager server.

Previous name	Use instead	More information
polyspace-rl-manager.exe	polyspace-server-settings.exe	Only the binary name has changed. The interface title, Metrics and Remote Server Settings , is unchanged.
polyspace-spooler.exe	polyspace-job-monitor.exe	The binary and the interface titles have changed.
Queue Manager or Spooler	Job Monitor	Interface labels have changed in the Polyspace interface and all its plug-ins.

Compatibility Considerations

You receive a warning if you use the old binaries or functions.

Local unit-by-unit verification

In R2014b, you can verify your source code file by file on your local installation of Polyspace. Each file is verified independently of the other files in your module. Previously, you could perform such unit-by-unit verification only on a remote server. However, you still require a Polyspace Server™ license.

For more information, see [Running Verification Unit-by-Unit](#).

R2014a

Version: 6.7

New Features

Bug Fixes

Polyspace Client for Ada Product

Default Text Editor

In R2014a, Polyspace uses a default text editor for opening source files. The editor is:

- WordPad in Windows
- vi in Linux

You can change the text editor from the **Editors** tab under **Options > Preferences**. For more information, see Specify Text Editor.

Support for Windows 8 and Windows Server 2012

Polyspace supports installation and analysis on Windows 8 and Windows Server® 2012 in compatibility mode.

Before installing the product in these operating systems:

- Right-click `setup.exe` and select **Properties**.
- Select the **Compatibility** tab.
- Check the **Run this program in compatibility mode for** box and from the drop-down list, select **Windows 7**.

For further installation instructions, see Install the Polyspace Software.

Polyspace Server for Ada Product

Support for Windows 8 and Windows Server 2012

Polyspace supports installation and analysis on Windows 8 and Windows Server 2012 in compatibility mode.

Before installing the product in these operating systems:

- Right-click `setup.exe` and select **Properties**.
- Select the **Compatibility** tab.
- Check the **Run this program in compatibility mode for** box and from the drop-down list, select **Windows 7**.

For further installation instructions, see [Install the Polyspace Software](#).

R2013b

Version: 6.6

New Features

Bug Fixes

Polyspace Client for Ada Product

Display call context analysis within a procedure

The software displays call context information for checks contained in a given procedure. For example, if one call of the procedure results in a red check, and another call results in a green check, the call information and color for both calls is kept in the procedure check.

User interface support for Japanese language

The software supports a Japanese user interface.

Project level statistics such as code covered by verification and itemization of checks

In R2013b, in the Project Manager interface, percentage code covered by verification and check distribution are shown in a graphic format in the **Verification Statistics** view.

- **Code covered by verification** — Ratio of unproven code lines to total code lines, expressed as a percentage. Shown in a column graph format.
- **Check distribution** — Number of checks of each color. Shown in a pie chart format.

New “results statistics” in the results review user interface

In R2013b, in the Results Manager interface, percentage code covered by verification and check distribution are shown in a graphic format in the **Results Statistics** view.

- **Code covered by verification** — Ratio of unproven code lines to total code lines, expressed as a percentage. Shown in a column graph format.
- **Check distribution** — Number of checks of each color. Shown in a pie chart format.

Improved filtering, grouping and ordering of results in “results summary” view

In R2013b, the **Results Summary** and the **Results Explorer** view have been merged into a more organized **Results Summary** view.

- In the **Results Summary** view, the error names are shown in an expanded format. Previously, a division-by-zero error appeared as *ZDV.num* in the **Results Explorer** view. Now it appears as **Division by Zero** in the revised **Results Summary** view.
- You can now group checks by **File/Function, Check** and **Package**. In addition to check color, grouping by **Check** divides checks into categories related to the origin of the check, such as **Control flow, Data flow, and Numerical**.
- You can now filter checks by **File, Package** and **Function**, in addition to existing filters. You can filter checks using the columns in the **Results Summary** view. If you have applied a filter, the column heading changes to indicate that all results are not displayed. You can also define custom filters.
- You can use one of four predefined methodologies to restrict number and type of checks displayed (replacing review levels 0,1,2, and 3). The methodologies are :
 - **First checks to review**
 - **Methodology for Ada > Light**
 - **Methodology for Ada > Moderate**
 - **All checks**

You can also use custom methodologies to restrict checks displayed.

- You can navigate the **Results Summary** view using the keyboard or GUI buttons. Both means of navigation respect the grouping, filters, and methodology used to display results.

Project configuration file extension renamed

The software saves project configuration files with the `.psprj` extension. Previously, the file extension was `.cfg`.

No generation of Excel output

In R2013b, the following features are not supported:

- Export of review comments to an Excel spreadsheet.
- Generation of Excel reports for verification results.

Starting an R2013a remote verification

If the R2013a and R2013b versions of Polyspace are installed on a client computer, submitting a R2013a remote verification from the client generates an error. For example:

```
/etc/Polyspace/polyspace.conf, line 7: Error: Duplicate entry for Polyspace for Ada 6.5 (R2013a).
```

As a temporary workaround, remove the R2013b version from the client configuration:

- 1 Select **Options > Metrics and Remote Server Settings**.
- 2 In the **Polyspace Server Settings** section, remove the product entry for R2013b.
- 3 Click **Apply**.

Changes to verification results

None

Changes to analysis options

- “New options” on page 12-4
- “Changes to existing options” on page 12-4

New options

The option `-context-sensitivity` is provided. See “Display call context analysis within a procedure” on page 12-2 and “Call context analysis during verification of procedure” on page 12-5.

Changes to existing options

The `-max-processes` option is available only from the command line.

Options removed

The option `-code-metrics` has been removed. By default, the software computes code complexity metrics.

Polyspace Server for Ada Product

Call context analysis during verification of procedure

The software considers context in the analysis of a procedure. For example, if one call of the procedure results in a red check, and another call results in a green check, the call information and color for both calls is kept in the procedure check.

Polyspace Remote Launcher Manager dialog box renamed

To configure your Polyspace server, use the Metrics and Remote Server Settings dialog box. Previously, this dialog box was called the Polyspace Remote Launcher Manager.

The name of the line command, `polyspace-rl-manager`, is unchanged.

R2013a

Version: 6.5

New Features

Bug Fixes

Polyspace Client for Ada Product

Modified Polyspace installer

In R2013a:

- The Polyspace installer does not create the *Polyspace_Common* folder.
- The Polyspace product does not depend on environment variables, that is, the installer does not create POLYSPACE_* variables.
- The Remote Launcher Manager does not open automatically during the installation process. In addition, if the service or daemon was running before the installation of the new product, the service or daemon is not automatically restarted. You must manually open the Remote Launcher Manager, configure your Polyspace Server, and then start the service or daemon.
- You must manually install Polyspace plug-in (or add-in) files. The Polyspace installer does not automatically activate these files. For example, before you run a verification from the Eclipse IDE, you must manually install the Polyspace plug-in file.

The following table provides information about new locations for files and folders.

Binary files	Location in previous release	Location in R2013a
Polyspace verification environment	<i>Polyspace_Install</i> \PVE \Polyspace.exe <i>Polyspace_Install</i> /PVE/bin/ polyspace	<i>Polyspace_Install</i> \polyspace \bin\polyspace[.exe]
Polyspace for Ada	<i>Polyspace_Install</i> \Verifier\wbin <i>Polyspace_Install</i> /Verifier/bin	<i>Polyspace_Install</i> \polyspace \bin
Spooler	<i>Polyspace_Common</i> \RemoteLauncher \wbin\PSQueueSpooler.exe <i>Polyspace_Common</i> / RemoteLauncher/bin/polyspace- spooler	<i>Polyspace_Install</i> \polyspace \bin\polyspace-spooler[.exe]

Binary files	Location in previous release	Location in R2013a
Polyspace plug-in for Eclipse	<i>Polyspace_Common</i> \PolyspaceForEclipse	<i>Polyspace_Install</i> \polyspace \plugin\eclipse
Polyspace plug-in for IBM Rational Rhapsody	<i>Polyspace_Common</i> \PolyspaceUMLLink	<i>Polyspace_Install</i> \polyspace \plugin\rhapsody
Remote Launcher	<i>Polyspace_Common</i> \RemoteLauncher	<i>Polyspace_Install</i> \polyspace \bin
Report Generator	<i>Polyspace_Common</i> \ReportGenerator	<i>Polyspace_Install</i> \polyspace \bin\polyspace-report-generator

For more information, see:

- Polyspace Software Administration
- Install Polyspace Plug-In for Eclipse IDE

Verification uses native binary file

In R2013a, the Polyspace verification is run using the native binary file for your computer architecture. Previously, you specified a 32-bit or 64-bit verification through the option `-machine-architecture` *option_value*. Now, if you specify `-machine-architecture`, the software ignores the option and generates the following warning:

```
Option "-machine-architecture option_value" is obsolete.
Verification run using native binary file for your computer architecture.
```

Previously, the default option value (auto) specified 32-bit verification. Now, on a Linux system, the Polyspace verification is 64-bit. You may observe an increase in verification time compared to previous releases. The increase depends on the application being verified and the architecture of your machine.

Note For Linux systems, only the Polyspace 64-bit Client and Server products are supported.

Exact representation of floating point numbers

Polyspace uses the exact value of a representable floating point number during code verification. Consider the floating point value of 1.0. Previously, Polyspace represented this value as a range 0.9999 - 1.0001. Now, Polyspace uses the exact value, that is 1.0.

Changes to verification results

None

Changes to analysis options

- “New options” on page 13-4
- “Changes to existing options” on page 13-4

New options

None

Changes to existing options

None

Options removed

The `-machine-architecture` option has been removed. See “Verification uses native binary file” on page 13-3.

Polyspace Server for Ada Product

Improved Polyspace Metrics security with HTTPS

You can now configure the Polyspace Metrics Web server with a secure HTTPS protocol. This configuration enables encrypted communication between the Polyspace server and the Polyspace Metrics Web interface. See [Configure Polyspace Metrics Web Interface](#).

R2012b

Version: 6.4

New Features

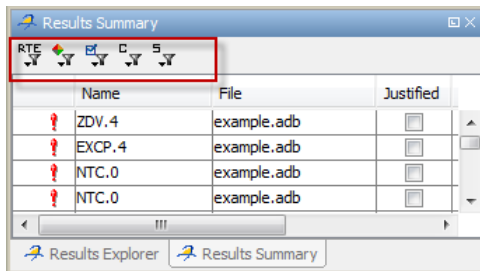
Bug Fixes

Polyspace Client for Ada Product

Review of verification results improvement

Check filters in results summary view

The **Results Summary** toolbar provides check filters, which previously were available only in the **Results Explorer** view.



You can apply the check filters from either view. For example, if you filter checks by color and category in the **Results Summary** view, the software also filters out these checks from the **Results Explorer** view. For more information, see [Filtering Checks](#).

Justify and comment a group of checks

You can now select a group of checks in either the **Results Explorer** or **Result Summary** view, and then justify and add review information to those checks. For more information, see [Reviewing and Commenting Checks](#).

Variable values in tooltips

The display of variable values in **Source** view tooltips is improved, providing information that narrows the range of the variable. For example, the tooltip might indicate whether the variable values are multiples of a number. The following table has examples of how tooltips display variable range values.

Previously	R2012b
0 or 2 or 4 or [6 .. 2147483642 (0x7FFFFFFFA)]	even values in [0 .. 2147483642 (0x7FFFFFFFA)]

Previously	R2012b
[-56 ..110] or [112 .. 166]	even values in [-56 .. 166]
[-1265 .. -46] or -23 or 0	multiples of 23 in [-1265 .. 0]
[0 .. 22] or 44	0 or 22 or 44

You might also see the following type of tooltip for variables:

1008 or 4800 or 14400 or 23040 (values are multiples of 48)

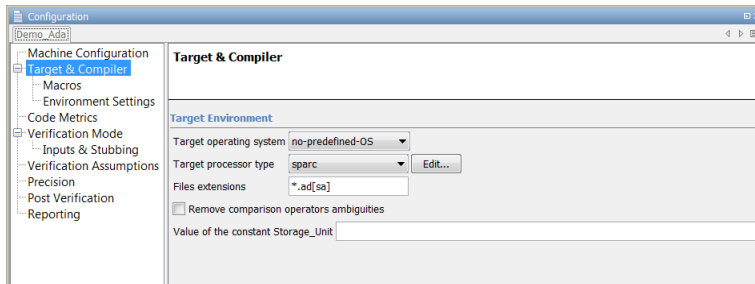
This enhancement might affect the contents of the text file *Your_Project_Variable_View.txt* file, which your verification generates in the ... \results\Polyspace-Doc folder. Instead of only an interval list for a variable, you might see, for example, the following conventions in the file:

- multiples of (a constant) in (the interval list)
- even values in (the interval list)
- odd values in (the interval list)

Reorganized Configuration pane

The Project Manager perspective of the Polyspace verification environment provides a reorganized **Configuration** pane that allows improved management of verification options.

The configuration process for code verification consists of different parts, for example, specifying your target environment and compiler behavior. The **Configuration** pane contains a tree with nodes that represent different parts of the configuration process. For example, to choose your target environment and compiler, select the **Target & Compiler** node and then specify your options.



You can specify the following option from the command line or through the **Configuration > Machine Configuration > Non-official options** field.

From command line	Removed from Configuration pane
-keep-all-files	Keep all preliminary results files

Polyspace plug-in for Eclipse with GNATbench

The Polyspace plug-in for the Eclipse IDE now supports Ada projects generated by GNATbench.

You can run verifications for Ada projects from the Eclipse IDE. However, Polyspace settings are not extracted from the Eclipse project.

Report content filtering

Previously, you used the MATLAB Report Generator software to apply filters to report templates through only the **Run-time Check Details Ordered by Color/File** component. The software provides a new component, **Report Customization (Filtering)**, which allows you to apply filters from any point of the report hierarchy.

For more information, see Customizing Verification Reports.

Parent folder for verification results

You can now specify a parent folder for your verification results through the **Project and result folder** tab of the Polyspace Preferences dialog box. If you do not specify a parent folder, the software uses the active module folder as the parent folder. For more information, see Specify Parent Folder for Results.

Support for relative paths

The Polyspace Project Manager now supports relative paths outside the project hierarchy. For example, paths for source files in a folder above the project location. Previously, relative paths were supported only for subfolders of the project.

Absolute paths are still supported.

Intermediate verification level support

From the Polyspace verification environment, you can no longer specify the value CDFA or “Control and Data Flow Analysis” for the option `-to`. If this value is specified in a project configuration file (`.cfg`), the software replaces the value with `compile` or “Source Compliance Checking”. However, from the command line, you can still specify CDFA or “Control and Data Flow Analysis” for `-to`.

Automatic import of comments and justifications

You can specify the batch option `-import-comments` *polyspace_results_folder_path* to automatically import comments and justifications from a previous verification. For more information, see Batch Options.

Storage of temporary files

If you specify the new option `-tmp-dir-in-results-dir`, Polyspace does not use the standard `/tmp` or `C:\Temp` folder to store temporary files. Instead, Polyspace uses a subfolder of the results folder. If the results folder is mounted on a network drive, this action might affect processing speed. Use this option only when the temporary folder partition is not large enough and troubleshooting is required.

For more information, see Batch Options.

Removal of Polyspace in One Click

The Polyspace in One Click feature will be removed in a future release.

Changes to verification results

None

Changes to analysis options

New options

None

Changes to existing options

Analysis options have been reorganized in the Project Manager. See “Reorganized Configuration pane” on page 14-3.

Option	Project Manager perspective			See also ...
	Previous label	R2012b label	Location on R2012b Configuration pane	
-add-to-results-repository	Add automatically to results repository	Add to results repository	Machine Configuration	
-array-expansion-size	Max size of global array variables	Unchanged	Precision	
-base-type-directly-visible	Remove comparison operators ambiguities	Unchanged	Target & Compiler	
-code-metrics	Calculate code metrics	Calculate code complexity metrics	Code Metrics	
-continue-with-all-niv	Continue after non initialized variables	Unchanged	Verification Assumptions	
-continue-with-in-out-niv	Continue with non-initialized in/out parameters	Unchanged	Verification Assumptions	
-critical-section-begin and -critical-section-end	Critical section details	Unchanged	Verification Mode	
-D	Defined Preprocessor Macros	Preprocessor definitions	Targets & Compiler > Macros	

Option	Project Manager perspective			See also ...
	Previous label	R2012b label	Location on R2012b Configuration pane	
-data-range-specifications	Variable/ function range setup	Unchanged	Verification Mode > Inputs & Stubbing	
-entry-points	Entry points or interruption	Entry points	Verification Mode	
-export-are-not-volatile	Treat export as non volatile	Unchanged	Verification Assumptions	
-extensions-for-spec-files	Files extensions	Unchanged	Target & Compiler	
-extra-flags		Non-official options	Machine Configuration	
-ignore-float-rounding	Ignore float rounding	Unchanged	Verification Assumptions	
-import-are-not-volatile	Treat import as non volatile	Unchanged	Verification Assumptions	
-init-stubbing- vars-random or - init-stubbing- vars-zero-or- random	Initialize of uninitialized global variables	Initialization of uninitialized global variables	Verification Mode > Inputs & Stubbing	
-keep-all-files	Keep all preliminary results files	Command line only		
-known-NTC	Functions known to cause NTC	Procedures known to cause NTC	Verification Assumptions	
-machine- architecture	Run verification in 32 or 64-bit mode	Unchanged	Machine Configuration	
-main-generator	Generate a main	Verify module	Verification Mode	

Option	Project Manager perspective			See also ...
	Previous label	R2012b label	Location on R2012b Configuration pane	
-max-processes	Number of processes for multiple core system	Unchanged	Machine Configuration	
-modules-precision	Specific precision	Unchanged	Precision	
-no-automatic-stubbing	No automatic stubbing	Unchanged	Verification Mode > Inputs & Stubbing	
-0	Precision Level	Precision level	Precision	
-OS-target	Target operating system	Unchanged	Target & Compiler	
-path-sensitivity-delta	Improve Precision of interprocedural analysis	Unchanged	Precision	
-permissive	Permissive	Command line only		
-post-analysis-command	Command to apply after the end of the verification	Unchanged	Post Verification	
-pre-analysis-command	Command/script to apply before start of the code verification	Unchanged	Environment Settings	
-report-output-format	Report output format	Output format	Reporting	
-report-template	Report template	Report template name	Reporting	

Option	Project Manager perspective			See also ...
	Previous label	R2012b label	Location on R2012b Configuration pane	
-server	Send to Polyspace Server	Unchanged	Machine Configuration	
-storage-unit	Value of the constant Storage_Unit	Unchanged	Target & Compiler	
-strict	Strict	Command line only		
-target	Target processor type	Unchanged	Target & Compiler	
-temporal-exclusions-file	Temporal exclusion point	Temporally exclusive tasks	Verification Mode	
-timeout	Verification time limit	Unchanged	Precision	
-to	To end of	Verification level	Precision	“Intermediate verification level support” on page 14-5
-U	Undefined Preprocessor Macros	Undefine preprocessor definitions	Targets & Compiler > Macros	
-unit-by-unit	Run a verification unit by unit	Run unit by unit verification	Verification Mode	
-unit-by-unit-common-source	Unit by unit common source files	Unchanged	Verification Mode	
-variables-expansion-depth	Expansion limit for a structure	Unchanged	Precision	
-variables-to-expand	Variables to expand	Unchanged	Precision	

Options removed

None

Polyspace Server for Ada Product

Password-protected access to projects in Polyspace Metrics

You can now restrict access to a project by specifying a password:

- When you run a verification with Polyspace Metrics enabled or upload results to the Polyspace Metrics repository.
- After the creation of a project.

For more information, see [Protect Access to Project Metrics](#).

R2012a

Version: 6.3

New Features

Bug Fixes

Compatibility Considerations

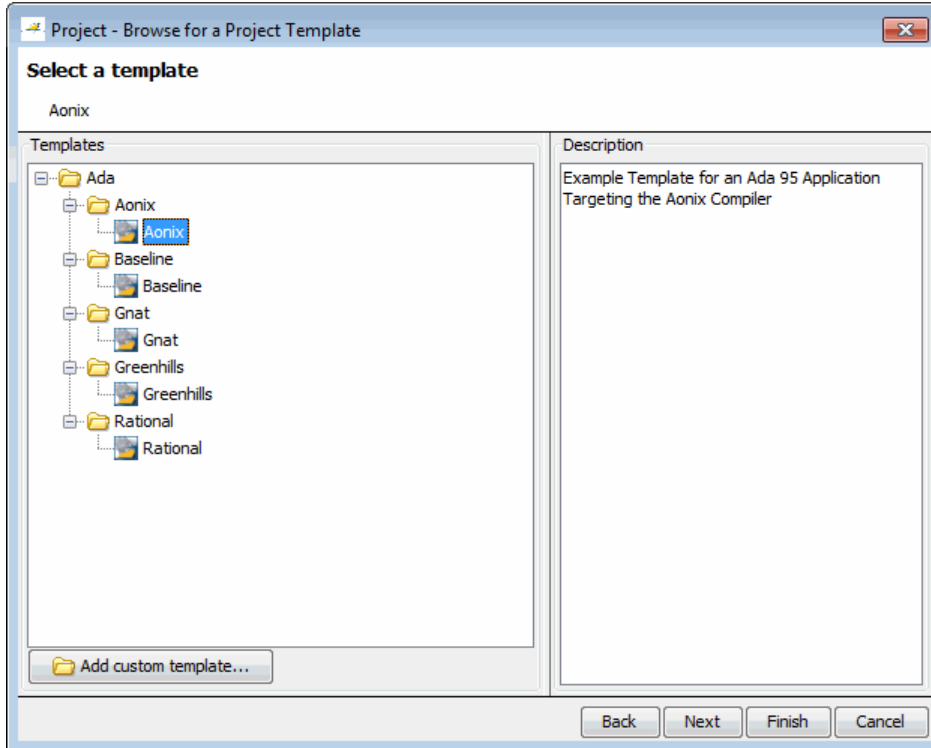
Polyspace Client for Ada Product

Compilation Environment Templates

Polyspace software now provides predefined compilation environment templates to help you configure verification projects.

These templates automatically set analysis options for the selected compiler, and help you locate the required include folders.

When creating a new project, you can select a template for your compiler.



For more information, see [Creating a Project](#).

Predefined Templates

Predefined templates are available for:

- **Aonix** - Ada 95 Application Targeting the Aonix Compiler
- **Baseline** - Generic Ada95 application
- **Gnat** - Ada 95 Application Targeting the Gnat Compiler
- **Greenhills** - Ada 95 Application Targeting the Greenhills Compiler
- **Rational** - Ada 95 Application Targeting the Rational Compiler

Custom Templates

You can also create custom templates from existing Project configurations, and use them to configure future projects.

For more information, see [Creating Custom Project Templates](#).

Suppression of NTC, NTL and UNR Checks Caused by Red Checks

Previously, the software would generate red NTC and NTL checks that were a consequence of other red checks. Now, the software does not generate these red checks. However, the software still gives the information that these red checks provided. The software highlights the corresponding call or loop identifier by applying a dashed underline to the identifier.

If the cause of the problem is known, the software provides this information in a tooltip for the underlined call or loop identifier. In addition, when you right-click the identifier, the context menu provides a **Go to Cause** item. Selecting this item takes you to the red check that is the cause.

The software:

- Does not generate gray UNR checks if the cause is a red check
- Still generates red NTC, NTL, and K-NTC checks for a call or loop identifier if the corresponding code contains orange checks.
- Does not generate NTC checks for the statements `exit` and `abort`, but provides tooltips for these statements. For example, `abort`, which does not correspond to an error, prevents the execution of a sequence of statements.

Compatibility Considerations

As a result of this new feature, you might observe a significant reduction in the total number of red and gray checks when compared to previous versions of the software.

Redefinition of Successful Verification

Previously, if a Polyspace verification failed, for example, during `pass1` (Software Safety Analysis level 1), the software communicated the failure through log messages and the **Project Browser**. However, if you clicked the `xx_LAST_RESULTS.exe` file within the **Project Browser**, the software displayed any results (colored checks) that had been generated by the verification. Now, the software deems a verification successful provided some results have been generated.

Polyspace Report Generator Enhancements

You can:

- Generate multiple reports in the Results Manager perspective. See [Generating Verification Reports](#).
- Customize report templates with MATLAB Report Generator software, which allows you to filter results by:
 - Justification status — Display all, justified, or unjustified checks.
 - Type — Display only listed types of run-time checks.
 - Function — Display only run-time checks from specified functions.

For more information, see [Customizing Verification Reports](#).

Polyspace In One Click (POC) Enhancement

The POC software has been rewritten. The software that replaces the previous **Send To** functionality now runs verifications without requesting additional settings. See [Using Polyspace In One Click](#).

Note Support for the **Send To** feature will be removed in a future release.

Header Files Without Run-Time Checks

It is quite common for code to contain header files with library inline functions that are never called. Previously, these files were listed in the **Results Explorer** view, which could slow down your review of results. Now, if header files do not contain run-time checks, the software does not list these header files in the **Results Explorer** view.

Improved Access to Polyspace Demos

In the Polyspace verification environment, you can now open supplied Demo projects through the **Help** menu.

Changes to Verification Results

Compatibility Considerations

Verification results might change when compared to previous versions of the software. Some checks might change color, and the Selectivity rate of your results might change.

NTC and NTL Checks

See “Suppression of NTC, NTL and UNR Checks Caused by Red Checks” on page 15-3.

Changes to Analysis Options

New Options

None

Changes to Existing Options

No name changes to existing options

Options Removed

None

Polyspace Server for Ada Product

Enhanced Polyspace Metrics Project Index

The enhanced project index enables you to display projects as categories, which is useful when you have a large number of projects to manage. Now, you can:

- Create multiple-level project categories.
- Move projects between categories by dragging and dropping projects.
- Rename and remove categories. You can remove categories without deleting the projects within the categories. The software moves these projects back to the root level.

For more information, see [Organizing Polyspace Metrics Projects](#).

Redefinition of Successful Verification

Previously, if a Polyspace verification failed, for example, during `pass1 (Software Safety Analysis level 1)`, the software communicated the failure through log messages and the **Project Browser**. However, if you clicked the `xx_LAST_RESULTS.exe` file within the **Project Browser**, the software displayed any results (colored checks) that had been generated by the verification. Now, the software deems a verification successful provided some results have been generated.

R2011b

Version: 6.2

New Features

Bug Fixes

Compatibility Considerations

Polyspace Client for Ada Product

Review Orange Checks that are Potential Run-Time Errors

Previously, there were two modes in which you could review verification results — manual and assistant. For the manual mode, you set the Assistant slider to **Off** and the software displayed all orange checks (in addition to the red and green checks) . With the assistant mode, there were three levels of review — corresponding to settings 1, 2, and 3 of the Assistant slider. You could specify the number of orange checks to display through the **Assistant Configuration** tab in the Polyspace Preference dialog box.

Now, Polyspace allows you to review results at five different levels. You can set the Review slider to **0**, **1**, **2**, **3**, or **All**:

- **0** — Display red and gray checks. In addition, display orange checks that are potential run-time errors. On the **Polyspace Preference > Review Configuration** tab, you can specify the type of potential run-time errors that you are interested in. You have the option of not displaying any orange checks.
- **1**, **2**, and **3** — This functionality is unchanged. Display red, gray, and green checks. In addition, display orange checks according to values specified on the **Polyspace Preference > Review Configuration** tab.
- **All** — Display red, gray, green, and all orange checks.

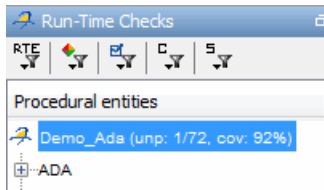
The **Assistant Configuration** tab is renamed the **Review Configuration** tab.

No Gray Checks in Unreachable Code

The only gray checks that Polyspace generates now are UNR checks for unreachable branches of code. In addition, Polyspace generates the UNR check only at the highest level of a branch. You no longer see nested UNR checks , that is, UNR checks in sub-branches.

In addition, the software displays two new metrics for the project in the procedural entities view:

- **unp** — Number of unreachable procedures (functions) as a fraction of the total number of procedures (functions)
- **cov** — Percentage of elementary operations in executable procedures (functions) covered by verification



These metrics provide:

- A measure of the code coverage achieved by the Polyspace verification.
- Indicators about the validity of your Polyspace configuration. For example, a large unp value and a low cov value may indicate an early red check or missing function call.

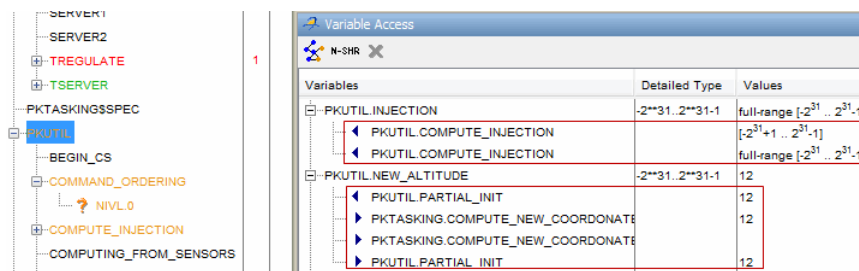
See Results Explorer Tab.

Compatibility Considerations

Due to the removal of non-UNR gray checks and nested UNR checks, verification results may change when compared to previous versions of the software.

Global Variable Range Information


In the **Variable Access** pane, Polyspace displays range information for read and write access operations on global variables within each source file. Previously, the displayed value was the union of all access operations on the global variable within a file. The software did not display range information for individual operations. Now, for global variables that are signed or unsigned integers, Polyspace also provides range information for the individual access operations from which the union value is obtained.



See Variable Access Pane.

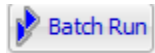
Read and Write Access in Dead Code

If a read or write access operation on a global variable lies within dead code, then Polyspace colors the operation gray in the **Variable Access** pane. When you examine

verification results, you can hide these operations by clicking the new filter button . See Variable Access Pane.

Run All Verifications in Project

You can have many verifications within a project, each verification being associated with an active configuration. Previously, you could only run one verification at a time from the Polyspace verification environment (PVE). Now, if you select a project and click the button



, Polyspace will run all verifications in the project. See Running a Verification.

Green NIV check for Unchecked_Conversion Function

Previously, the software produced an orange NIV check for each call to an instance of the Ada generic library function `Unchecked_Conversion`. Now by default, the software produces a green NIV check for each call. If you want to revert to the previous behavior, run your verification with the option `-D POLYSPACE_UNCHECKED_CONVERSION_NO_INIT`.

Polyspace Server for Ada Product

Running Multiple Verifications Simultaneously

If you purchase more than one license for a Polyspace server, you can now configure the server to run multiple verifications at the same time. This can improve the performance of server verifications.

To configure your server to run multiple verifications, open the Remote Launcher Manager, then set the **Number of Polyspace verifications that can run simultaneously on this server** to the number of licenses you have activated for your server.

For more information, see *Configuring Polyspace Server Software* in the Polyspace Installation Guide.

Compatibility Considerations

If you configure your server to run more than one verification simultaneously, the server will not be able to run verifications using older versions of the software.

For example, if your server has both R2011a and R2011b software installed, you cannot run a verification using the R2011a software.

Polyspace Metrics

Review Changes between Results of Successive Verifications

You can specify a version of a project and review only the differences between verification results of the specified version and the previous verification. See *Review New Findings*.

File Modules with Quality Levels

If you have projects with two or more file modules in the Polyspace verification environment, by default Polyspace Metrics displays verification results using the same module structure. However, Polyspace Metrics also allows you to create or delete file modules. You can group files into a module and specify a quality level for the module, which applies to all files within the module. This feature allows you to specify different quality levels for your files in the review of verification results. See *Creating a File Module and Specifying Quality Level*.

Enhanced Graphs and Charts

Polyspace Metrics displays enhanced graphs and charts.

If you specify a range of project versions:

- On the **Summary** tab, **Run-Time Defects** are plotted as separate categories, High, Medium, and Low.
- On the Run-Time Checks tab:
 - Under **Confirmed Defects**, you see separate plots for the defect categories, High, Medium, and Low.
 - Under **Run-Time Findings**, you see separate plots for red checks, NTC checks, and gray checks.

If you specify a single version of a project, Polyspace Metrics displays file defect information, ordering the files according to the number of defects in each file. Use the new **# items** field to specify the maximum number of files for which information is displayed. See Displaying Metrics for Single Project Version.

R2011a

Version: 6.1

New Features

Bug Fixes

Compatibility Considerations

Polyspace Client for Ada Product

Code Metrics

Polyspace Metrics now generates Ada code metrics, giving you the number of:

- Protected shared variables
- Unprotected shared variables
- Files
- Lines of code
- Packages
- Packages that appear in `with` statements
- Subprograms that appear in `with` statements

You can view the metrics by:


- Using a Web browser to access the **Code Metrics** view of your project in Polyspace Metrics
- Examining the XML file that the software generates

For more information, see [Setting Up Verification to Generate Metrics and Review Code Metrics](#) in the Polyspace Products for Ada User's Guide.

Saving Polyspace Metrics Review

Previously, when you saved your project (**Ctrl+S**) after a review of results from Polyspace Metrics, the software would save your comments and justifications both locally and in the Polyspace Metrics repository.

Now, if you save your project (**Ctrl+S**), the software saves your review to a local folder

only. A new button  is available on the Run-Time Checks toolbar. If you click this button, the software saves your comments and justifications to a local folder *and* the Polyspace Metrics repository.

This feature allows you to upload your review to the repository only when you are satisfied that your review is, for example, correct and complete.

You can still configure your software to display the previous behavior.

For more information, see Saving Review Comments and Justifications in the Polyspace Products for Ada User's Guide.

Support for Rational and Aonix Compilers

The software now provides support for the IBM Rational Apex and Aonix® compilers. For more information, see Operating system target for Standard Libraries compatibility in the Polyspace Products for Ada Reference.

Multi-Core Support

On multi-core computers, you can reduce verification time by specifying the use of core processors simultaneously to perform the verification. The software provides a new command line option `-max-processes`, which uses a default value of 4. You can specify any value between 1 and 128. For more information, see Number of processes for multiple CPU core systems in the Polyspace Products for Ada Reference.

Generated Main with Explicit Tasks and Accept Statements

If you select the option `Generate a main` and there are explicit tasks in the source code, then task bodies are verified like subprograms and `accept` statements are not executed. After verification, code associated with the `accept` statements is gray. For more information, see `Generate a main` in the Polyspace Products for Ada Reference.

Compatibility Considerations

Previously, if there were explicit tasks and `accept` statements in the source code, a verification run could have generated red, green, or orange checks for code within the `accept` statements. Now, verification colors the code within these `accept` statements gray.

Enhancements in Run-Time Checks Perspective

Within the source code view, you can investigate checks with tooltips that provide range information about variables.

In addition, when you click a check, the software provides information about the check in the Review Details pane.

For more information, see [Using Range Information in Results Manager Perspective and Selecting a Check to Review in the Polyspace Products for Ada User's Guide](#).

Compatibility Considerations

Because of these enhancements, the IPT and VOA checks are no longer required, and the software does not generate these checks anymore.

UOVFL and UNFL Checks Removed

The software no longer generates UOVFL and UNFL checks, but generates OVFL checks in place of these checks.

Compatibility Considerations

Due to the replacement of UOVFL and UNFL checks by the OVFL check, the number of green checks may decrease when compared with previous versions of the software. For example, a combination of an orange OVFL and a green UNFL generated by a previous version may be replaced by a single orange OVFL.

NIV Checks for Universal Constants

The software now generates NIV checks for read operations on universal constants. If the constants are used in your code, the NIV checks are green. If the constants are in unreachable code, the NIV checks are gray.

Compatibility Considerations

This enhancement may change the check metrics and selectivity of the verification. The number of green and gray checks may be higher compared to the number generated by previous versions of the software.

Variable Range Inconsistency between Variable Access Pane and Tooltips

The range given for a variable in the Variable Access Pane (Variables View) can differ from the range given by tooltips on the reads of a variable in the Source code view. The range provided by the tooltip will be wider than the range given in the Variables View.

This difference is due to imprecision in the tooltip. The Variables View provides the correct range for the variable.

For example:

- Variables View states that variable *X* is in range [0 . . 4000]
- Tooltip on a read of *X* states that the range is [0 , 7000].

In this case, [0 . . 4000] is the correct range. The tooltip range is caused by imprecision that may be fixed in future releases.

Verification Time Limit

You can now specify a time limit for verifications using the `-timeout` option. If the verification does not complete within the specified time, the verification fails.

For more information, see “Verification Time Limit” in the Polyspace Products for Ada Reference.

Automatic Addition of Specifications for Selected Source Files

When launching a verification from the Eclipse IDE or the Polyspace Verification Environment, the software automatically searches for the package specifications associated with the selected source files, and adds them to the set of sources to verify.

As a result, the verification may contain more source files than you select.

Stubbed Tasks

Programs with stubbed tasks, such as those using Ada rendezvous, previously caused compilation errors. These programs can now be verified.

Scaling Issue for Large Applications with Nested Structures/ Arrays

With R2011a, you may experience scaling problems for large applications that manipulate strongly nested structures or arrays. When verifying such applications, the verification may fail during the “Software Safety Analysis Level 0” phase. No verification results are generated, although the data dictionaries (Variable View and Call-Graph View) are accessible.

With previous releases, such applications could be verified, but the verification required several days to complete, and produced results with very low selectivity.

If you experience this problem, try performing a unit-by-unit verification. For more information, see *Running Verification Unit-by-Unit in the Polyspace Products for Ada User's Guide*.

Compatibility Considerations

Verification may fail for code that was previously verified with an earlier version of the product.

Product Name Change in Files and Folders

The Polyspace product name has changed from “PolySpace” to “Polyspace” in R2011a. This change impacts the name of all files and folders created by the software.

For example:

- PolySpace-Doc folder has changed to Polyspace-Doc
- PolySpace_XXXX.log file has changed to Polyspace_XXXX.log

Compatibility Considerations

If you have existing folders that use the previous product name (for example, PolySpace/PolySpace_Common) the R2011a installation will continue to use these existing folders. However, files or folders created during or after installation will use the new name.

If you have shortcuts or scripts that are case-sensitive, you should update them to use the new name.

License Manager Support

The License Manager for Polyspace products has been upgraded to FlexNet® 11.9.

You may need to upgrade your FlexNet server and daemon.

For more information, see Polyspace License Installation in the Polyspace Installation Guide.

Changes to Verification Results

- “Write Access in Data Table with Main Generator and Protected Objects” on page 17-7
- “NIV for Variables Initialized at Declaration” on page 17-8
- “Range Error with greenhills OS Target” on page 17-8
- “UOVFL and UNFL Checks Removed” on page 17-8
- “NIV Checks for Universal Constants” on page 17-8
- “Constants Defined in Package System” on page 17-8
- “Initialization of Variables Declared and Assigned in Specs” on page 17-9
- “Parameterless Protected Procedure as Entry Point” on page 17-9

Compatibility Considerations

Verification results may change when compared to previous versions of the software. Some checks may change color, and the Selectivity rate of your results may change.

Refer to the following sections for information on the specific changes.

Write Access in Data Table with Main Generator and Protected Objects

In previous releases, when using the `-main-generator` option, an incorrect write access could appear in the data-table when entries of protected objects were called.

In R2011a, the data-table no longer includes locations with critical section names.

There may be less write accesses with protected objects that have defined entries when you use the option `-main-generator`.

NIV for Variables Initialized at Declaration

In previous releases, there is no NIV check when a variable is initialized at the declaration.

In R2011a, verification always puts NIV checks on variables and constants. OVFL checks are not put on constants.

The total number of checks may change when compared with previous releases.

Range Error with greenhills OS Target

In previous releases, verification could report a false red when using `Ada.interrupts.Interrupt_ID` in source code designed for the greenhills compiler.

In R2011a, when you use the type `Ada.interrupts.Interrupt_ID`, and set the `-OS-target` to `greenhills`, the bounds of the type `Interrupt_ID` have changed.

Verification results may change when compared to previous versions of the software. Some checks may change color, and the Selectivity rate of your results may change.

UOVFL and UNFL Checks Removed

The software no longer generates UOVFL and UNFL checks, but generates OVFL checks in place of these checks.

The number of checks may decrease compared to previous versions of the software.

NIV Checks for Universal Constants

The software now generates NIV checks for read operations on universal constants. If the constants are used in your code, the NIV checks are green. If the constants are in unreachable code, the NIV checks are gray.

Verification results may change when compared to previous versions of the software. The number of green and gray checks may be higher compared to the number generated by previous versions of the software.

Constants Defined in Package System

In previous releases, constants defined in package system were ignored.

For example:

```
Max_Binary_Modulus    : constant := 16#1000000000#;  
Max_Nonbinary_Modulus : constant := 16#FFFFFFFF#;
```

In R2011a, values of constants defined in the package system that are used in the program to be verified are taken into account for the verification. This may impact the results.

Initialization of Variables Declared and Assigned in Specs

In previous releases, verification could incorrectly report a red ZDV check for a variable of a type with default values, when the variable is global.

In R2011a, when using the option `-main-generator`, components with initial values of global variables of composite types that are not initialized are considered full range.

Verification results may change when compared to previous versions of the software. Some checks may change color, and the Selectivity rate of your results may change.

Parameterless Protected Procedure as Entry Point

In previous releases, when a parameterless protected procedure is used as an entry point via the option `-entry-points`, the verification fails.

In R2011a, parameterless protected procedures applied to a global object are now accepted as values of the option `-entry-points`.

Changes to Analysis Options

New Options

- **Calculate code metrics** (`-code metrics`) - See “Code Metrics” on page 17-2.
- **Verification time limit** (`-timeout`) - See “Verification Time Limit” on page 17-5.
- **Number of processes for multiple CPU core systems** (`-max-processes`) - See “Multi-Core Support” on page 17-3.
- **Less range information** (`-less-range-information`) - See “Enhancements in Run-Time Checks Perspective” on page 17-3.

Changes to Existing Options

None

Deprecated Options

None

Polyspace Server for Ada Product

Code Metrics

Polyspace Metrics now generates Ada code metrics, giving you the number of:

- Protected shared variables
- Unprotected shared variables
- Files
- Lines of code
- Packages
- Packages that appear in `with` statements
- Subprograms that appear in `with` statements

You can view the metrics by:


- Using a Web browser to access the **Code Metrics** view of your project in Polyspace Metrics
- Examining the XML file that the software generates

For more information, see [Setting Up Verification to Generate Metrics and Review Code Metrics](#) in the Polyspace Products for Ada User's Guide.

Saving Polyspace Metrics Review

Previously, when you saved your project (**Ctrl+S**) after a review of results from Polyspace Metrics, the software would save your comments and justifications both locally and in the Polyspace Metrics repository.

Now, if you save your project (**Ctrl+S**), the software saves your review to a local folder

only. A new button  is available on the Run-Time Checks toolbar. If you click this button, the software saves your comments and justifications to a local folder *and* the Polyspace Metrics repository.

This feature allows you to upload your review to the repository only when you are satisfied that your review is, for example, correct and complete.

You can still configure your software to display the previous behavior.

For more information, see [Saving Review Comments and Justifications in the Polyspace Products for Ada User's Guide](#).

Multi-Core Support

On multi-core computers, you can reduce verification time by specifying the use of core processors simultaneously to perform the verification. The software provides a new command line option `-max-processes`, which uses a default value of 4. You can specify any value between 1 and 128.

For more information, see [Number of processes for multiple CPU core systems in the Polyspace Products for Ada Reference](#).

Generated Main with Explicit Tasks and Accept Statements

If you select the option `Generate a main` and there are explicit tasks in the source code, then task bodies are verified like subprograms and `accept` statements are not executed. After verification, code associated with the `accept` statements is gray. For more information, see [Generate a main in the Polyspace Products for Ada Reference](#).

Compatibility Considerations

Previously, if there were explicit tasks and `accept` statements in the source code, a verification run could have generated red, green, or orange checks for code within the `accept` statements. Now, verification colors the code within these `accept` statements gray.

Automatic Comment Import for Server Verifications

When you download results from the Polyspace server, the software now automatically imports any comments from results in the destination folder into the downloaded results (except for verifications using the option `-add-to-results-repository`).

As a result of this change, you can now download intermediate results for a verification running on the Polyspace server, and add or edit comments on those results. When you later download the final results, your comments are preserved.

You can also download and comment on a single unit of a unit-by-unit verification, even if other units are still pending in the server queue. When you download the final results (which overwrites the earlier results), your comments are preserved.

License Manager Support

The License Manager for Polyspace products has been upgraded to FlexNet 11.9.

You may need to upgrade your FlexNet server and daemon.

For more information, see Polyspace License Installation in the Polyspace Installation Guide.

R2010b

Version: 6.0

New Features

Bug Fixes

Compatibility Considerations

Polyspace Client for Ada Product

Polyspace Graphical User Interface

Redesigned Polyspace graphical user interface replaces the Launcher and Viewer modules with a single, unified interface called the Polyspace verification environment (PVE).

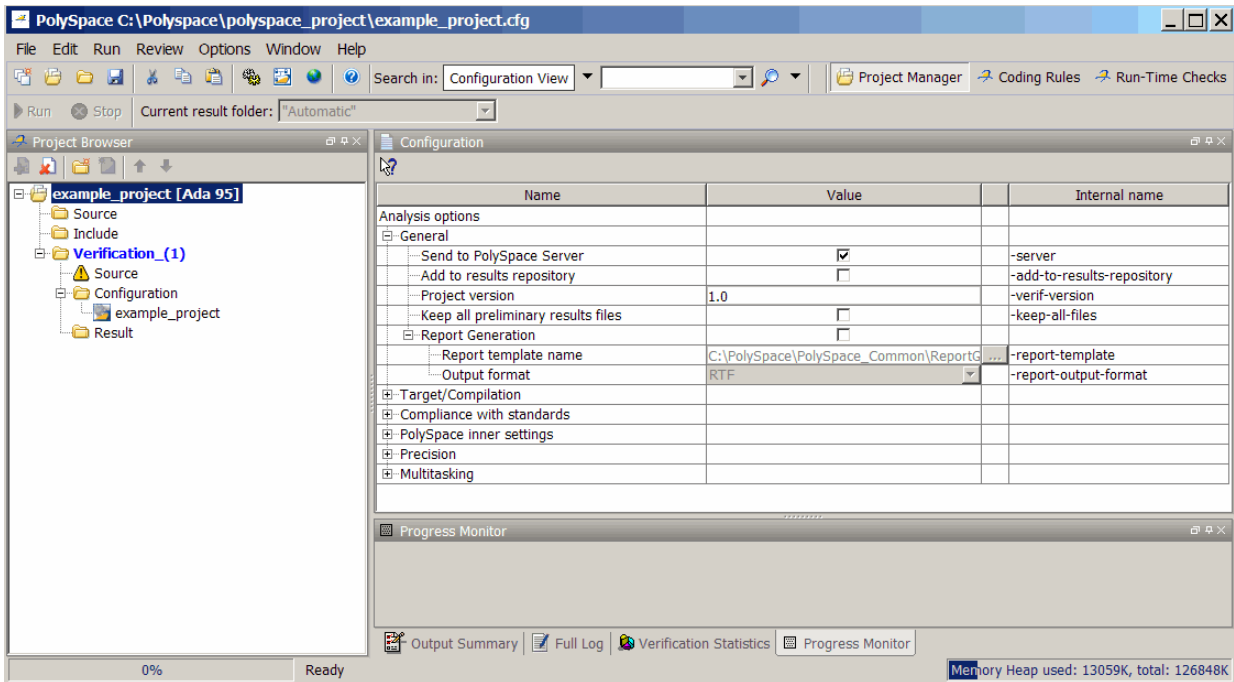
You use the Polyspace verification environment to create Polyspace projects, launch verifications, and review verification results. The new interface also enables you to provide comments in the source code or in the results.

The Polyspace verification environment consists of two perspectives:

- “Project Manager Perspective” on page 18-2
- “Run-Time Checks Perspective” on page 18-3

Project Manager Perspective

The Project Manager perspective allows you to create projects, set verification parameters, and launch verifications.



For information on using the Project Manager perspective, see [Setting Up a Verification Project in the Polyspace Products for Ada User's Guide](#).

Run-Time Checks Perspective

The Run-Time Checks perspective allows you to review verification results, comment individual checks, and track review progress.

The screenshot displays the PolySpace IDE interface with the following components and labels:

- Selected check:** Points to the error message "Error : float division by zero occurs" in the Review Details panel.
- Coding review:** Points to the Review Statistics table, which shows the progress of various checks.
- Procedural entities:** Points to the left-hand tree view showing the project structure.
- Source code:** Points to the main code editor displaying the Ada source code.
- Variables:** Points to the Variable Access panel, which shows the current state of variables.
- Call tree:** Points to the Call Hierarchy panel, which shows the call stack.

The Review Statistics table is as follows:

Coding review progress	Count	Progr...
Red ZDV reviewed / to review	0/1	0
Red reviewed / to review	0/7	0
Gray reviewed / to review	0/3	0
Orange reviewed / to review	0/5	0
Software reliability indicator	39/60	65

The Call Hierarchy table is as follows:

Calls	Line
RUNTIME_ERROR.PROCEDURE_ZDV	27
RUNTIME_ERROR.PROCEDURE_ZDV	34
RUNTIME_ERROR.MAINRTE	200

For information on using the Run-Time Checks perspective, see [Reviewing Verification Results in the Polyspace Products for Ada User's Guide](#).

Data Range Specifications

The Data Range Specifications (DRS) feature allows you to set constraints on data ranges using a text file. With this text file, you can specify data ranges for global variables, stubbed functions and procedures, and function call inputs.

For more information, see *Specifying Data Ranges for Variables, Functions, and Procedures* in the *Polyspace Products for Ada User's Guide*.

Extended Support for Tasks

You can now verify Ada code that contains the following task-related features :

- Pointers to explicit tasks
- Private task types
- Tasks with discriminants
- Entry families
- Explicit tasks declared in a package - you can now verify the package with the `-main-generator` option

Previously, these features would generate errors during a verification.

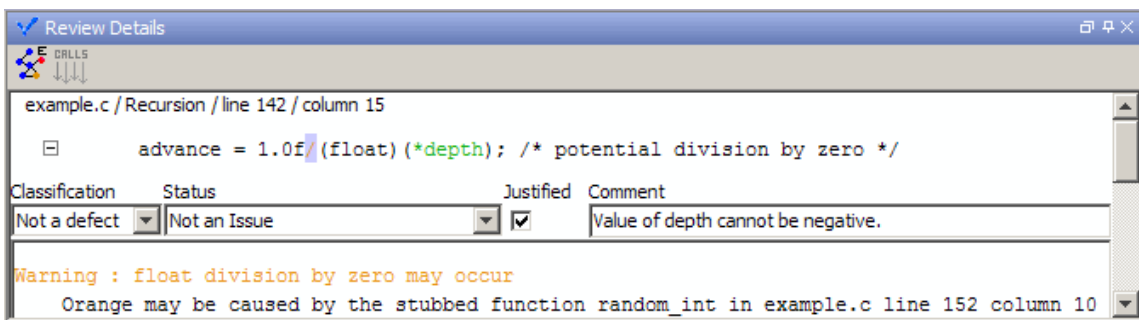
Preprocessor Macros for Compilation

You can now specify, with the `-D` option, the use of preprocessor macros in code compilation. The `-U` option, which nullifies this `-D` option, is also available.

For more information, see *Defined Preprocessor Macros(-D compiler-flag)* and *Undefined Preprocessor Macros (-U compiler-flag)* in the *Polyspace Products for Ada Reference Guide*.

New Options to Classify Run-Time Checks

When reviewing results in the Run-Time Checks perspective, the software now provides additional options for classifying checks



After you review the check, you can specify the following:

- **Classification** - Select an option to describe the seriousness of the issue.
- **Status** - Select an option to describe how you intend to address the issue.
- **Justified** - Select the check box to indicate that you have justified this check.
- **Comment** - Enter additional information about the check

The software provides pre-defined values for Classification and Status. You can also define your own statuses.

In addition to reviewing checks through the user interface, you can place comments in your code that highlight and categorize checks identified in previous verifications. The software displays the information that you provide within your code comments, and marks the checks as **Justified**.

For more information, see *Reviewing and Commenting Checks* in the Polyspace Products for Ada User's Guide.

Compatibility Considerations

The syntax for code comments has changed to reflect the new options for categorizing checks.

The syntax for run-time checks is now:

```
-- polyspace<RTE:RTE1 : [Classification] : [Status] > [Comment]
```

If you placed comments in your code using the previous syntax, the comments will still appear in your results, but the text may be displayed in different columns.

For more information, see *Syntax for Run-Time Errors* in the Polyspace Products for Ada User's Guide.

Permissiveness on File and Folder Names

Polyspace software now allows space characters in the names of Projects, source files, and folders, as well as in option arguments.

In addition, multiple source files with the same name are now allowed.

Note Non-ASCII characters in file names are not supported.

Default Target Processor

The default setting of the Target processor type (`-target-processor`) option has changed from SPARC to i386.

Compatibility Considerations

If you launch verifications without specifying a value for this option, the default value has changed. Therefore, your verification results may change when compared to previous versions of the software. Some checks may change color, and the Selectivity rate of your results may change.

Operating System Support

Added support for the Windows 7 operating system.

Solaris™ operating system is no longer supported for new installations.

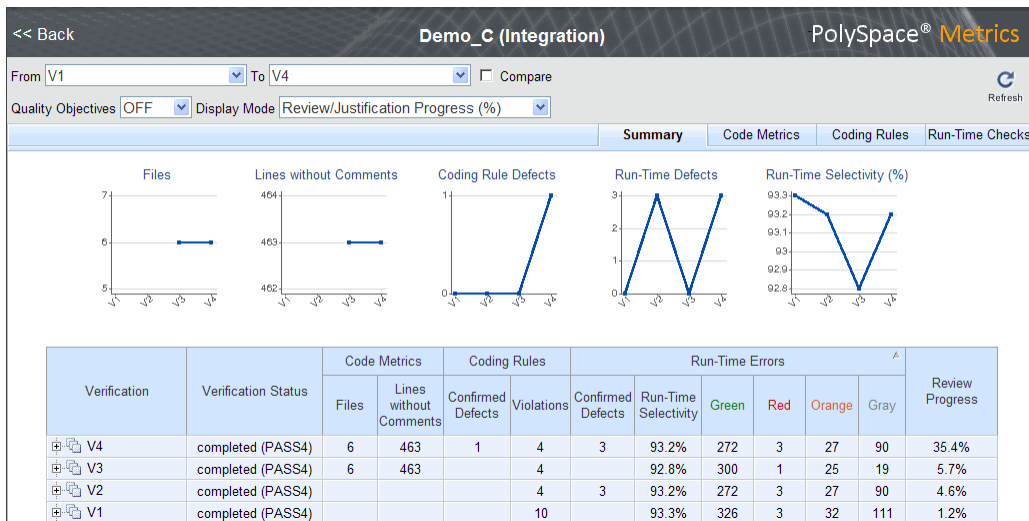
For more information, see the Polyspace Installation Guide.

Polyspace Server for Ada Product

Polyspace Metrics Web Interface

A web-based tool for software development managers, quality assurance engineers, and software developers, which allows you to do the following in software projects:

- Evaluate software quality metrics
- Monitor the variation of code metrics, and run-time checks through the lifecycle of a project
- View defect numbers, run-time reliability of the software, review progress, and the status of the code with respect to software quality objectives.



In addition, if you have the Polyspace Client for Ada product installed on your computer, you can drill down to run-time checks in the Polyspace verification environment. You can review these run-time checks and, if required, classify these checks as defects.

For more information, see Software Quality with Polyspace Metrics in the Polyspace Products for Ada User's Guide.

Automatic Verification

Configure verifications to start automatically and periodically, for example, at a specific time every night. At the end of each verification, the software stores results in a results repository and updates the metrics for your software project. You can also configure the software to send you an email at the end of the verification. This email contains links to results, compilation errors, run-time errors, or processing errors.

For more information, see *Specifying Automatic Verification in the Polyspace Products for Ada User's Guide*.

Operating System Support

Added support for the Windows 7 operating system.

Solaris operating system is no longer supported for new installations.

For more information, see the *Polyspace Installation Guide*.

R2010a

Version: 5.5

New Features

Bug Fixes

Polyspace Client for Ada Product

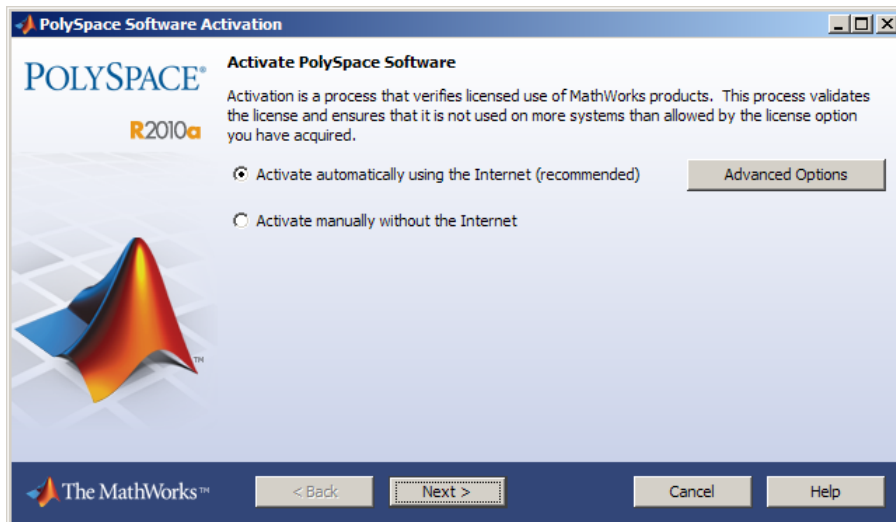
License Activation

Polyspace products now support the MathWorks software activation mechanism.

Activation is a process that verifies licensed use of MathWorks® products. The process validates your product licenses and ensures that they are used correctly. You must complete the activation process before you can use Polyspace software.

Note If you are using Designated Computer (Individual) licenses, you must activate the license for each Polyspace system individually. However, if you are using Concurrent licenses for multiple Polyspace systems, you do not need to activate each Polyspace system. You activate the license once (for the FLEXnet license server), then provide license files for each Polyspace system.

The easiest way to activate the software is to log in to your MathWorks Account during installation. At the end of the installation process, the Polyspace Software Activation dialog box opens.



Follow the prompts in the Polyspace Software Activation dialog box to complete the activation process.

If you do not have a MathWorks account, you can create one during the activation process. To create an account, you must have an Activation Key, which identifies the license you want to install and activate.

If your Polyspace system is not connected to the internet, you can access the MathWorks License Center on a computer with internet access, activate your license, and download a license file for transfer to your Polyspace system. If you do not have access to a computer with an Internet connection, contact Customer Support.

For more information on how to activate your software, see *Activating Polyspace Software* in the Polyspace Installation Guide.

For more information on software activation, including frequently asked questions, refer to the MathWorks Web site: www.mathworks.com/support/activation/polyspace.html

Source Code Comment Support

Polyspace software now allows you to place comments in your code that provide information about known run-time errors. You can use these comments to highlight and categorize previously identified run-time errors. This information can then make the review process quicker and easier.

When you review verification results, the Viewer displays comments on individual checks. You can then skip these commented checks during the review process, or simply use them as additional information during your review.

For more information, see *Highlighting Known Run-Time Errors in the Polyspace Products for Ada User's Guide*.

Eclipse Integration

Polyspace integration with the Eclipse IDE, Version 3.4 and 3.5.

The Polyspace Client for Ada can be integrated with the Eclipse™ Integrated Development Environment through the Polyspace plug-in for Eclipse IDE.

This plug-in provides Polyspace source code verification and bug detection functionality for source code developed within Eclipse IDE. Features include the following:

- A contextual menu that allows you to launch a verification of one or more files.
- Views in the Eclipse editor that allow you to set verification parameters and monitor verification progress.

For more information, see Using Polyspace Software in the Eclipse IDE in the Polyspace Products for Ada User's Guide.

Operating System Support

Added support for the following Linux distributions:

- OpenSuSE 11.1
- Debian 5.x
- Ubuntu 8.04, 8.10, 9.04, and 9.10

For more information, see the Polyspace Installation Guide.

Polyspace Server for Ada Product

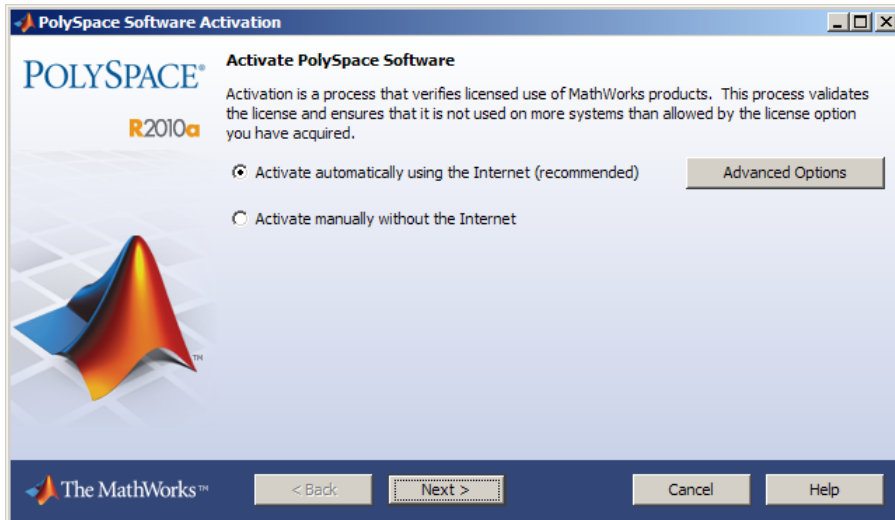
License Activation

Polyspace products now support the MathWorks software activation mechanism.

Activation is a process that verifies licensed use of MathWorks products. The process validates your product licenses and ensures that they are used correctly. You must complete the activation process before you can use Polyspace software.

Note If you are using Designated Computer (Individual) licenses, you must activate the license for each Polyspace system individually. However, if you are using Concurrent licenses for multiple Polyspace systems, you do not need to activate each Polyspace system. You activate the license once (for the FLEXnet license server), then provide license files for each Polyspace system.

The easiest way to activate the software is to log in to your MathWorks Account during installation. At the end of the installation process, the Polyspace Software Activation dialog box opens.



Follow the prompts in the Polyspace Software Activation dialog box to complete the activation process.

If you do not have a MathWorks account, you can create one during the activation process. To create an account, you must have an Activation Key, which identifies the license you want to install and activate.

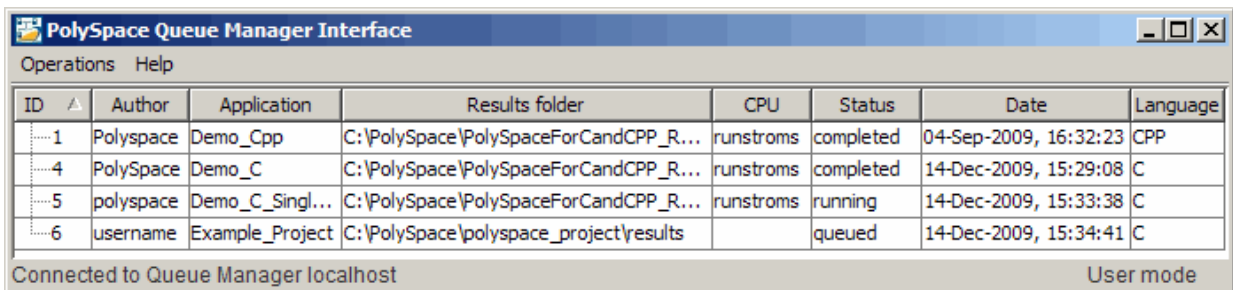
If your Polyspace system is not connected to the internet, you can access the MathWorks License Center on a computer with internet access, activate your license, and download a license file for transfer to your Polyspace system. If you do not have access to a computer with an Internet connection, contact Customer Support.

For more information on how to activate your software, see *Activating Polyspace Software* in the Polyspace Installation Guide.

For more information on software activation, including frequently asked questions, refer to the MathWorks Web site: www.mathworks.com/support/activation/polyspace.html

Queue Manager Interface

The Polyspace Queue Manager Interface (Spooler) is now available on Linux machines, providing a graphical interface for managing verification jobs on the Polyspace server.



The screenshot shows a window titled "PolySpace Queue Manager Interface" with a menu bar containing "Operations" and "Help". Below the menu bar is a table with the following columns: ID, Author, Application, Results folder, CPU, Status, Date, and Language. The table contains four rows of data. At the bottom of the window, it displays "Connected to Queue Manager localhost" and "User mode".

ID	Author	Application	Results folder	CPU	Status	Date	Language
1	Polyspace	Demo_Cpp	C:\PolySpace\PolySpaceForCandCPP_R...	runstroms	completed	04-Sep-2009, 16:32:23	CPP
4	Polyspace	Demo_C	C:\PolySpace\PolySpaceForCandCPP_R...	runstroms	completed	14-Dec-2009, 15:29:08	C
5	polyspace	Demo_C_Singl...	C:\PolySpace\PolySpaceForCandCPP_R...	runstroms	running	14-Dec-2009, 15:33:38	C
6	username	Example_Project	C:\PolySpace\polyspace_project\results		queued	14-Dec-2009, 15:34:41	C

Connected to Queue Manager localhost User mode

For more information, see *Managing Verification Jobs Using Polyspace Queue Manager* in the Polyspace Products for Ada User's Guide.

Operating System Support

Added support for the following Linux distributions:

- OpenSuSE 11.1
- Debian 5.x
- Ubuntu 8.04, 8.10, 9.04, and 9.10

For more information, see the Polyspace Installation Guide.

R2009b

Version: 5.4

New Features

Bug Fixes

Compatibility Considerations

Polyspace Client for Ada Product

Report Generator

New Report Generator that presents Polyspace results in PDF, HTML, and other output formats.

The Polyspace Report Generator allows you to generate reports about your verification results, using the following predefined report templates:

- **Coding Rules Report** - Provides information about compliance with MISRA-C Coding Rules, as well as Polyspace configuration settings for the verification.
- **Developer Report** - Provides information useful to developers, including summary results, detailed lists of red, orange, and gray checks, and Polyspace configuration settings for the verification.
- **Developer with Green Checks Report** - Provides the same content as the Developer Report, but also includes a detailed list of green checks.
- **Quality Report** - Provides information useful to quality engineers, including summary results, statistics about the code, graphs showing distributions of checks per file, and Polyspace configuration settings for the verification.

The Polyspace Report Generator allows you to generate verification reports in the following formats:

- HTML
- PDF
- RTF
- Microsoft® Word
- XML

Note Microsoft Word format is not available on UNIX platforms. RTF format is used instead.

For more information, see Generating Reports of Verification Results in the Polyspace Products for Ada User's Guide .

Main Generator Enhancements

Enhanced main generator that considers the scope of a procedure and variable, improving error detection at the package level.

This change may affect your results compared with previous releases, and how you interpret the new results. Specific changes include:


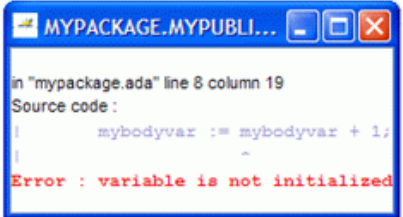
- Uninitialized package body variables are considered uninitialized
- Uncalled package-scope procedures/functions are considered unreachable
- Functions/procedures declared at the spec level are called only once
- Uninitialized spec level variables are considered possibly uninitialized

For more information on the main generator, see Main Generator Overview in the Polyspace Products for Ada User's Guide .

Uninitialized Package Body Variables are Considered Uninitialized

Uninitialized variables that are declared only in the package body are now considered uninitialized, and generate red NIV checks.

Previously, these variables were considered initialized (green NIV) with full-range values. This behavior made interpretation of results easier and allowed verification to continue. However, the software now considers these variables uninitialized (red NIV) and stops verification at this point. This new behavior is more accurate with respect to the actual initialization state of the variables. You must correct the code before verification can continue. Alternatively, you can use the option `-continue-with-all-niv`.

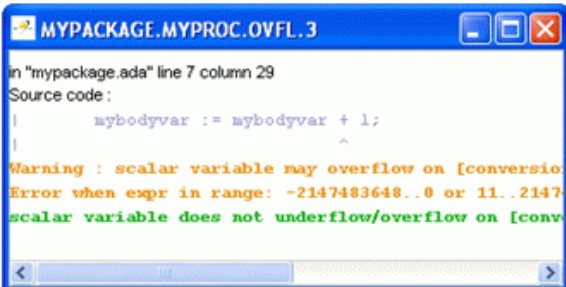
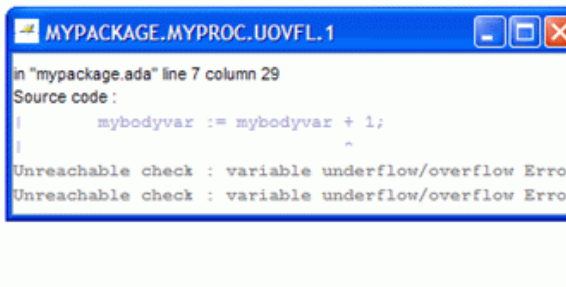
Change 1: Uninitialized package body variables are considered uninitialized	
Settings: -main-generator	
9a	9b
<pre> 1 package mypackage is 2 type myint is new integer range 1..10; 3 procedure myPublicProc; 4 end mypackage; 5 package body mypackage is 6 mybodyvar : myint; 7 procedure myPublicProc is begin 8 mybodyvar := mybodyvar + 1; 9 end myPublicProc; 10 end mypackage; </pre> 	<pre> 1 package mypackage is 2 type myint is new integer range 1..10; 3 procedure myPublicProc; 4 end mypackage; 5 package body mypackage is 6 mybodyvar : myint; 7 procedure myPublicProc is begin 8 mybodyvar := mybodyvar + 1; 9 end myPublicProc; 10 end mypackage; </pre> 

Uncalled Package-scope Procedures/Functions are Considered Unreachable

Procedures and functions that are declared in the package but not called by code within the package body provided for the verification will now be considered unreachable (gray).

Previously, all procedures and functions in a package were considered for verification and subsequently colored. The argument for this behavior was that these functions and procedures could be called by code inside the package that had not been provided for the verification. Now, the software considers this code unreachable (gray) unless there is a path of execution that leads to it.

Change 2: Uncalled package-scope procedures/functions are considered unreachable**Settings: -main-generator**

9a	9b
<pre> 1 package mypackage is 2 type myint is new integer range 1..10; 3 end mypackage; 4 package body mypackage is 5 mybodyvar : myint; 6 procedure myProc is begin 7 mybodyvar := mybodyvar + 1; 8 end myProc; 9 end mypackage; </pre> 	<pre> 1 package mypackage is 2 type myint is new integer range 1..10; 3 end mypackage; 4 package body mypackage is 5 mybodyvar : myint; 6 procedure myProc is begin 7 mybodyvar := mybodyvar + 1; 8 end myProc; 9 end mypackage; </pre> 

Functions/Procedures Declared at the Spec Level are Called Only Once

Functions or procedures declared at the specification level are called only once.


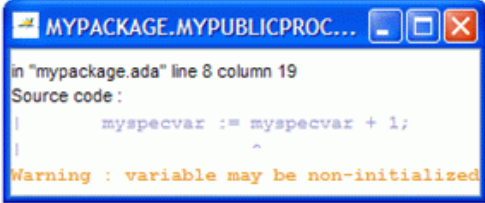
Note This behavior changed in Release 2010a. In R2010a or later, the main generator can call a function several times.

Uninitialized Spec Level Variables are Considered Possibly Uninitialized

Uninitialized variables declared in a package specification will now be considered possibly uninitialized (orange NIV). Previously, these variables were considered initialized (green NIV) with full-range values.

The software now considers uninitialized variables that are declared only in the package *body* as uninitialized (red NIV). However, for uninitialized variables declared in a package *specification*, it is possible that packages that use these variables may initialize these variables. The software now recognizes this possibility and generates orange NIV checks for uninitialized variables declared in a package specification.

This behavior is not changed if you use options `-init-stubbing-vars-random` or `-init-stubbing-vars-zero-or-random` to initialize uninitialized variables. Specification-level variables will still be considered possibly uninitialized (orange NIV), because the packages that use these variables can alter the variables, even to the extent of uninitialized the variables.

Change 4: Uninitialized spec level variables are considered possibly uninitialized	
Settings: -main-generator	
9a	9b
<pre> 1 package mypackage is 2 type myint is new integer range 1..10; 3 procedure myPublicProc; 4 <u>myspecvar</u> : myint; 5 end mypackage; 6 package body mypackage is 7 procedure myPublicProc is begin 8 <u>myspecvar</u> := <u>myspecvar</u> + 1; 9 end myPublicProc; 10 end mypackage; </pre> 	<pre> 1 package mypackage is 2 type myint is new integer range 1..10; 3 procedure myPublicProc; 4 <u>myspecvar</u> : myint; 5 end mypackage; 6 package body mypackage is 7 procedure myPublicProc is begin 8 <u>myspecvar</u> := <u>myspecvar</u> + 1; 9 end myPublicProc; 10 end mypackage; </pre> 

Compatibility Considerations

Changes to the main generator may result in differences in your verification results, when compared with earlier versions of the software. If you verified your code with previous versions of the software (for example, R2009a), be aware of these changes, how they affect your colored results and the way you interpret the results.

Global Data Graphs

New Graphs (similar to concurrent access graphs) available for all global data.

You can display the access sequence for any variable that is read or written in the code. The access graph displays the read and write access for the variable.

For more information, see [Displaying the Access Graph for Variables](#) in the Polyspace Products for Ada User's Guide .

Unit-by-unit Verification

New option to create a separate verification job for each source file in the project.

When you run a unit-by-unit verification, each source file is compiled, sent to the Polyspace Server, and verified individually.

The queue manager displays a job for the full verification group, as well as jobs for each unit (using a tree structure).

When verification is complete, you can download and view results for the entire project, or for individual units. When downloading a verification group, all the unit results are downloaded and a summary of the download status for each unit is displayed.

Note Unit by unit verification is available only for server verifications.

For more information, see [Running Verification Unit-by-Unit](#) in the Polyspace Products for Ada Reference.

Operating System Support

Added support for Windows Server 2008.

For more information, see the [Polyspace Installation Guide](#).

Polyspace Server for Ada Product

Operating System Support

Added support for Windows Server 2008.

For more information, see the Polyspace Installation Guide.

R2009a

Version: 5.3

New Features

Bug Fixes

Polyspace Client for Ada Product

Character Encoding Options

New character encoding option allows you to view source files created on an operating system that uses different character encoding than your current system.

You specify the character encoding used by the operating system on which the source file was created using the **Character encoding** tab in the Preferences dialog box of the Polyspace Viewer.

For more information, see Setting Character Encoding Preferences in the Polyspace Products for Ada User's Guide.

Operating System Support

Added support for Windows Server 2003, Windows Vista™, and Red Hat Enterprise Linux Workstation v.5.

For more information, see the Polyspace Installation Guide.

Polyspace Server for Ada Product

Operating System Support

Added support for Windows Server 2003, Windows Vista, and Red Hat Enterprise Linux Workstation v.5.

For more information, see the Polyspace Installation Guide.

R2008b

Version: 5.2

New Features

Bug Fixes

Polyspace Client for Ada Product

Operating System Support

Added support for 64-bit Linux.

For more information, see the Polyspace Installation Guide.

Polyspace Server for Ada Product

Operating System Support

Added support for 64-bit Linux.

For more information, see the Polyspace Installation Guide.

R2008a

Version: 5.1

New Features

Bug Fixes

Compatibility Considerations

Polyspace Client for Ada Product

Removed Cygwin Software Dependency for Windows Platforms

Previous versions of Polyspace products used Cygwin™ emulation to run UNIX® commands on Windows systems.

In version 5.1, the Cygwin software dependency has been removed. Removing Cygwin simplifies the Polyspace product installation process while improving the performance and robustness of the Polyspace Verification process.

Compatibility Considerations

Due to the Cygwin changes, Polyspace Client for Ada Version 5.1 is not compatible with previous versions of Polyspace products on Windows platforms. To avoid compatibility problems on Windows platforms, you must upgrade all your Polyspace client and server products at the same time.

If your Polyspace server is running on a Windows platform, the binary files used for batch commands in previous releases will not work without Cygwin software installed. In version 5.1, the software provides new .exe files for these batch commands. However, these files are now located in a different location.

Commands	Previous Location	New Location
Standard	<i>PolyspaceInstallDir</i> \verifier\bin\	<i>PolyspaceInstallDir</i> \verifier\wbin\
Remote Launcher	<i>Polyspace_Common</i> \RemoteLauncher\bin\	<i>Polyspace_Common</i> \RemoteLauncher\wbin\
Viewer	<i>Polyspace_Common</i> \Viewer\bin \	<i>Polyspace_Common</i> \Viewer \wbin\

If you wrote scripts using batch commands in previous releases, you must modify the scripts to use the new commands.

In addition, if you used Cygwin shell scripts for postprocessing or target compilation, those scripts will no longer run on version 5.1. To support scripting, the Polyspace software now includes Perl. You can access Perl in:

PolyspaceInstallDir\verifier\tools\perl\win32\bin\perl.exe

Enhanced Installer

Version 5.1 includes an enhanced and simplified installer for all Polyspace products. The installation process is now faster and easier to complete than in previous releases.

For more information, see the Polyspace Installation Guide.

Viewer Improvements

Enhanced exploring capability in the viewer to provide more focused information.

Unnecessary information has been eliminated from the Procedural Entities (RTE) View and Call Tree View to improve usability.

Enhanced Compilation Checks

Enhanced compilation checks to stop verification only when a pointer to a task is initiated or used, rather than when it is declared.

One-Click Enhancements

Enhanced Polyspace-In-One-Click options, to allow switching between multiple projects using a browse history.

Operating System Support

Added support for the following operating systems:

- Solaris 2.10
- Windows XP x64 (32-bit mode)

For more information, see the Polyspace Installation Guide.

Polyspace Server for Ada Product

Removed Cygwin Software Dependency for Windows Platforms

Previous versions of Polyspace products used Cygwin emulation to run UNIX commands on Windows systems.

In version 5.1, the Cygwin software dependency has been removed. Removing Cygwin simplifies the Polyspace product installation process while improving the performance and robustness of the Polyspace Verification process.

Compatibility Considerations

Due to the Cygwin changes, Polyspace Server for Ada Version 5.1 is not compatible with previous versions of Polyspace products on Windows platforms. To avoid compatibility problems on Windows platforms, you must upgrade all your Polyspace client and server products at the same time.

If your Polyspace server is running on a Windows platform, the binary files used for batch commands in previous releases will not work without Cygwin software installed. In version 5.1, the software provides new .exe files for these batch commands. However, these files are now located in a different location.

Commands	Previous Location	New Location
Standard	<i>PolyspaceInstallDir</i> \verifier\bin\	<i>PolyspaceInstallDir</i> \verifier\wbin\
Remote Launcher	<i>Polyspace_Common</i> \RemoteLauncher\bin\	<i>Polyspace_Common</i> \RemoteLauncher\wbin\
Viewer	<i>Polyspace_Common\Viewer</i> \bin\	<i>Polyspace_Common\Viewer</i> \wbin\

If you wrote scripts using batch commands in previous releases, you must modify the scripts to use the new commands.

In addition, if you used Cygwin shell scripts for postprocessing or target compilation, those scripts will no longer run on version 5.1. To support scripting, the Polyspace software now includes Perl. You can access Perl in:

PolyspaceInstallDir\verifier\tools\perl\win32\bin\perl.exe

Enhanced Installer

Version 5.1 includes an enhanced and simplified installer for all Polyspace products. The installation process is now faster and easier to complete than in previous releases.

For more information, see the Polyspace Installation Guide.

Operating System Support

Added support for the following operating systems:

- Solaris 2.10
- Windows XP x64 (32-bit mode)

For more information, see the Polyspace Installation Guide.

